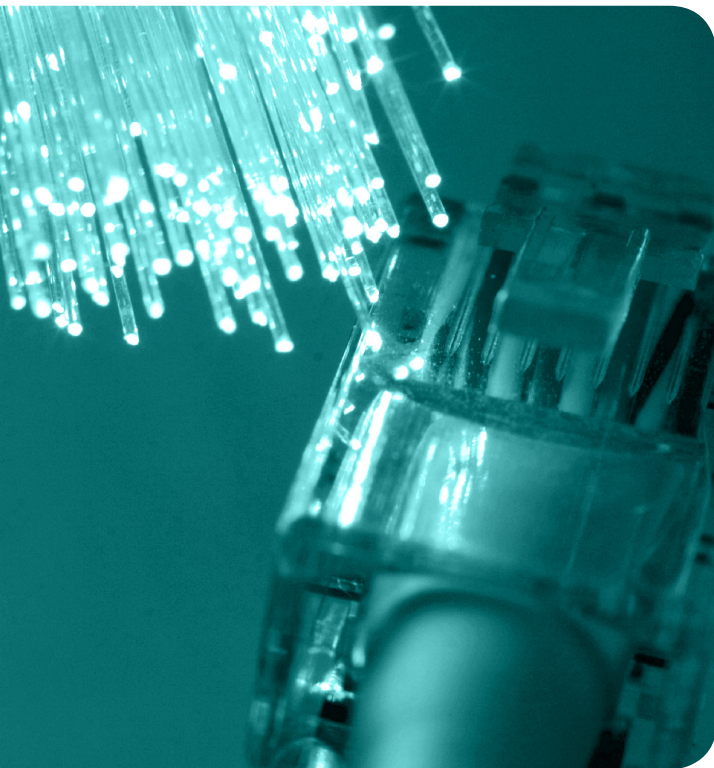


25 Year **PRODUCT WARRANTY**



MSS Fibre Systems warrants our product at the following site **for a period of 25 Years** from the date of installation based on the information received by the installer.

SITE ADDRESS: _____

INSTALLED BY: _____

PHONE NUMBER: _____ **DATE OF INSTALLATION:** _____

SIGNED: _____ **PRINT NAME:** _____ **DATE:** _____

DETAILS OF INSTALLATION REQUIRED:

- Test Results; light source & power meter including make & model with current calibration.
- Details of Cable Run(s); type of cable used, distance and core counts.
- Details of the equipment used to terminate and house the fibre at each end.
- Details of the type of environments the product is exposed to.

TERMS: The 25 Year Warranty covers product only at the original site of installation from the date of installation. It does not cover labour or incidental costs. The "25 Year Warranty" will be void if non-MSS product is installed on the network. Defective product must be returned to MSS Fibre Systems for inspection; MSS Fibre Systems will not accept claims sight unseen. MSS Fibre Systems will repair or replace product once inspected and the claim has been approved with new or refurbished items at their discretion. Products will then be covered under the balance of the 25 Year Warranty or 90 Days, whichever is higher.

For full product specifications contact **MSS FIBRE SYSTEMS** on **1 300 367 538** | Email: sales@mssfibre.com.au | Visit: www.mssfibre.com.au

MSS FIBRE has a policy of continuous product improvement and reserves the right to change materials and specifications without notice. Drawings, where used, are not to scale. All dimensions are in millimetres and sizes given are approximate. Where available, technical and MSDS data sheets are available on mssfibre.com.au. All MSS FIBRE products should be installed and used in accordance with manufacturer's instructions provided. Warning: products may be the subject of registered designs and patents.