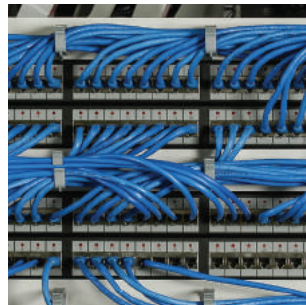
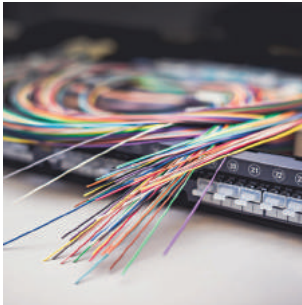
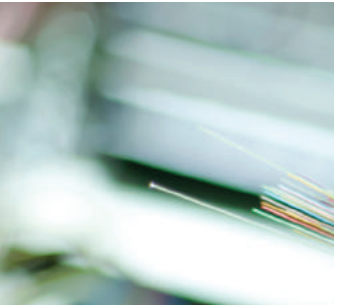




One Call → One Day → One Delivery



# DATA CATALOGUE

[www.cabac.co.nz](http://www.cabac.co.nz)



## OUR WAREHOUSE

### NEW ZEALAND

7B CARMONT PLACE  
MOUNT WELLINGTON  
AUCKLAND 1061  
NEW ZEALAND  
T: +64 800 776 969  
E: [sales@cabac.co.nz](mailto:sales@cabac.co.nz)

# CONTENTS

NETWORK CABLING	1
CONNECTORS	19
POWERBOARDS & CORDS	23
NETWORK HARDWARE	29
COMPUTER, VIDEO & AUDIO CABLES	31
DATA TOOLS	37
INDEX	50





One Call → One Day → One Delivery

# DOWNLOAD OUR APP



## LATEST CATALOGUE RANGE & STOCK

Stocking level by warehouse, datasheets, technical features, test certificates, videos and more



## YOUR OWN PERSONAL PRICE BOOK

With volume breaks



## ORDER ONLINE

Store multiple destinations



## TRACK YOUR ORDERS

Real time updates



## WEEKLY SPECIALS & CLEARANCE LINES



## REQUEST COPIES OF STATEMENTS & INVOICES

Keep up to date with your account



Call your account manager for your signin name & password.

# Network Cabling

Telco - Voice Disconnect Modules and Frames	4
CAT6 Patch Leads	8
CAT6a Patch Leads	13
Lan Cable Rolls	15
Line Splitters	17
Patch Panels	18

## CABAC OPEN SYSTEMS WARRANTY

Many structured cabling projects require a systems warranty and until now only certified installers of the major cabling system manufacturers could offer these. Now any ACMA registered cabler can offer an economical “mix and match” system backed up by CABAC’s Standards based 25 year Structured Cabling System (SCS) warranty. In true open systems tradition, any verified cable may be used with the CABAC’s range of UL verified jacks and patch panels. The CABAC warranty program doesn’t have any onerous pre-requirements such as certified installer agreements or compulsory training courses that are a feature of other programs.



### What is CABAC SCS warranty?

CABAC SCS is a full replacement, 25-year Standards based warranty covering components, link performance and applications support.

The warranty can be offered for any size of project by any ACMA registered cabler for links comprising solely with CABAC’s range of jacks and patch panels and any manufacturers verified cable.

### What is CABAC’s commitment under the warranty program?

In the event of a valid claim by the end-user CABAC will provide replacement products to the cabler and pay the reasonable costs of their reinstallation on the following provisos:

- The cable used in the link is compliant with the requirements of the edition of AS/NZS 3080 current at the effective date of the warranty
- The declaration made by the cabler on the warranty application form was true

### Here’s just a few beneficiaries of CABAC Warranty who care about the quality of their work and reputation, and want you all to know about it:

- **Mighty River Power**, a major renewable energy provider in Auckland NZ, had a mighty 147 outlets installed by Team Cabling Ltd. It’s all covered by our 20 year warranty, so that’s a lot of cabling that they can count on for a lot of years.
- **Interface Flor**, a commercial flooring manufacturer, has the assurance of our Open Systems Warranty thanks to the good work of Joycomm. Their work has passed rigorous testing to qualify it for replacement, if required, for a full 20 years.
- **The BH Corporation** has really looked after the Wollongong Council by complying to the CABAC Warranty criteria with their work on the Wollongong City Gallery and the IPAC theatre. They can rest easy knowing that their sites are safe for staff and the public.



# Wiring Standards and Connections

## Ethernet Cabling UTP

Unshielded Twisted Pair (UTP) cable is used for most cable installations in Australia and New Zealand. The most common layout is called a Star Topology, where individual UTP wires are connected in a star format back to a central switch. Shielded Twisted Pair (STP) is infrequently used, because UTP will work in most environments.

Both UTP and STP are available in solid and stranded core. It is important to apply the correct cable as performance of both varies. The rule applied to a segment of 100m is a maximum of 90m solid LAN cable and 10m of patch.

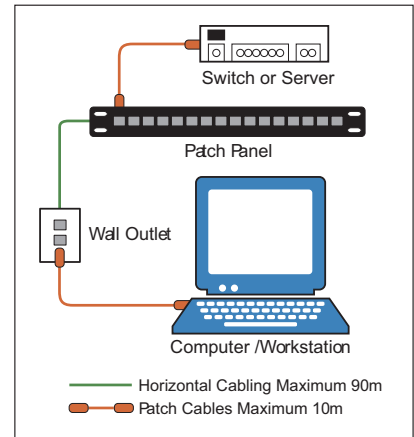
### Which Cable should I use?

#### LAN Cable

Solid core between wall plate and patch panels, max 90m.

#### Patch Cable

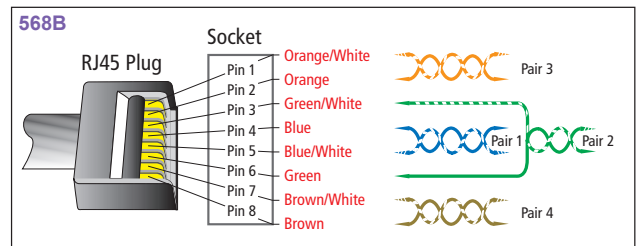
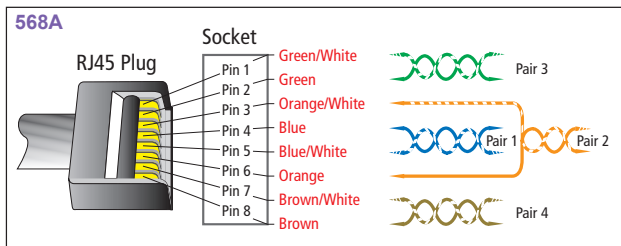
Stranded core patching between your wall plate and PC or on the patch panel itself, max 10m.



## UTP and STP Pin Assignment

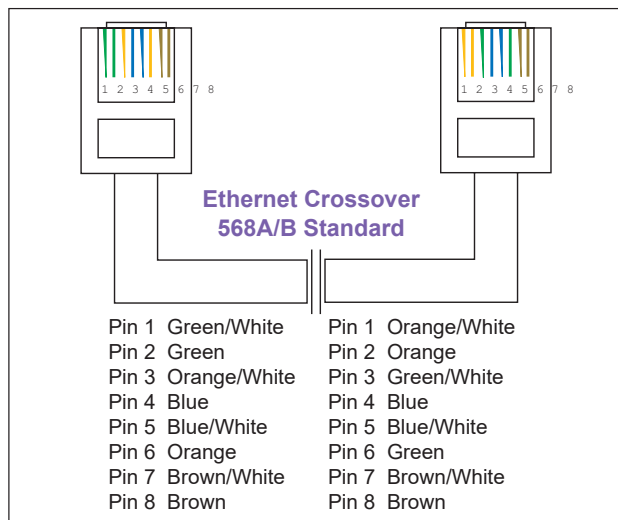
UTP and STP cable is made up of four pairs of wires that are twisted in a very special way, to maintain correct signal propagation and minimise cross talk. The pairs are made up of one solid coloured wire and one white/colour stripe.

There are two international connection standards known as 568A and 568B. Australia and New Zealand use the 568A standard for the most part. Standard Ethernet is transmitted over two pairs using pins 1,2,3,6 on a RJ45 connector.



## Cross Over Leads

Cross over leads are used to create uplinks between switching devices, typically switches, or in peer to peer (computer to computer) networking.



# NETWORK CABLING

## TELCO - VOICE DISCONNECT MODULES AND FRAMES

### TELCO MODULES

DISCONNECT MODULE 10PR WHITE

Unit: PAK Qty: 10



**Part No. DMP10**

- Disconnect module for 10 incoming and 10 outgoing pairs
- Disconnection contact used for opening the circuit
- KATT style terminations
- Pairs numbered 1 to 10



DISCON. MODULE PROFILE BKT 10PR 10PK

Unit: EA Qty: 1



**Part No. PDMP10-PK**

- Designed for cat3 telecommunications connections
- Disconnect module for 10 incoming and 10 outgoing pairs
- Pairs numbered 1 to 10
- Pack of 10



DISCON. MODULE PROFILE BKT 10PR

Unit: EA Qty: 1



**Part No. PDMP10**

- Designed for cat3 telecommunications connections
- Disconnect module for 10 incoming and 10 outgoing pairs
- Pairs numbered 1 to 10
- Disconnect contact used for opening the circuit



EARTH MODULE RED

Unit: EA Qty: 1



**Part No. REM**

- Used as an earthing point to safely direct electrical surges away from sensitive equipment
- Connection of up to 30 earth leads to one single connection
- Complete with earth cable
- KATT style terminations

LABEL HOLDER S-NET HINGED

Unit: EA Qty: 1



**Part No. HLBH**

- Label holder useful for holding individual module labels
- Hinged to allow easy access for jumper
- Allows access for patching and testing
- Snaps onto module face



## TELCO FRAMES AND BRACKETS

FINAL DISTRIBUTION POINT 20PR

Unit: EA Qty: 1



**Part No. FDP**

- 20-pair final distribution point for use beyond the network boundary - up to 30 pair capacity
- Includes 2x DMP10 10 pair modules with room for 1 more
- Shallow lid does not allow overvoltage protection magazines
- KATT style terminations



MAIN DISTRIBUTION FRAME 20PR

Unit: EA Qty: 1



**Part No. MDF**

- 20-pair Main Distribution Frame for internal use beyond the network boundary - up to 30 pair capacity
- Includes 2x DMP10 10 pair modules with room for 1 more
- Shallow lid does not allow overvoltage protection magazines
- KATT style terminations



PROFILE FRAME JUMPERABLE 11 WAY

Unit: EA Qty: 1



**Part No. PBM11W**

- 100 pair frame for internal use as a Campus Distributor, Building Distributor or Floor Distributor at or beyond the network boundary
- For mounting of SERIES 2 or HIGHBAND ten pair modules (PDMP10-PK)
- Typically one label holder is used every 100 pairs
- Length: 365mm



PROFILE FRAME JUMPERABLE 27 WAY

Unit: EA Qty: 1



**Part No. PBM27W**

- 250 pair frame for internal use as a Campus Distributor, Building Distributor or Floor Distributor at or beyond the network boundary
- For mounting of SERIES 2 or HIGHBAND ten pair modules (PDMP10-PK)
- Typically one label holder is used every 100 pairs
- Length: 715mm



BACKMOUNT FRAME JUMPABLE 11 WAY COVER

Unit: EA Qty: 1



**Part No. FC11**

- Provides adequate depth for overvoltage protection magazines or test cords fitted into the modules
- Frame covers to suit 11 way and 27 way distribution frames
- Provision for records book storage
- Supplied with a lock and key



# NETWORK CABLING

## BACKMOUNT FRAME JUMPABLE 27 WAY COVER



- Provides adequate depth for overvoltage protection magazines or test cords fitted into the modules
- Frame covers to suit 11 way and 27 way distribution frames
- Provision for records book storage
- Supplied with a lock and key



Part No.	Description	Unit	Qty
<b>FC27</b>	BACKMOUNT FRAME JUMPABLE 27 WAY COVER	EA	1

## TELCO JUMPABLE BACK MOUNTS

### BACKMOUNT FRAME JUMPABLE 11 WAY

Unit: EA Qty: 1



#### Part No. DMFBM11

- Frames for internal use as a Campus Distributor, Building Distributor or Floor Distributor at or beyond the network boundary
- Metal frame
- For mounting S-Net modules: DMP10, PDMP10-PK



### BACKMOUNT FRAME JUMPABLE 27 WAY

Unit: EA Qty: 1



#### Part No. DMFBM27

- Frames for internal use as a Campus Distributor, Building Distributor or Floor Distributor at or beyond the network boundary
- Metal frame
- For mounting S-Net modules: DMP10, PDMP10-PK



### BACKMOUNT FRAME 19 INCH RECESSED

Unit: EA Qty: 1



#### Part No. DMFBM15R

- Backmount frame for 19 inch rack mounting
- For mounting S-Net modules
- Recessed to allow better clearance of rack door
- 15 Backmount module attachment points - 140 Pairs

## TELCO BACK MOUNT FRAMES



- Frames for internal use as a Campus Distributor, Building Distributor or Floor Distributor at or beyond the network boundary
- Metal frame
- For mounting S-Net modules: DMP10, PDMP10-PK



Part No.	Description	Unit	Qty
<b>DMF2</b>	BACKMOUNT FRAME 2 WAY 50MM DEEP	EA	1
<b>DMF3</b>	BACKMOUNT FRAME 3 WAY 50MM DEEP	EA	1
<b>DMF4</b>	BACKMOUNT FRAME 4 WAY 50MM DEEP	EA	1
<b>DMF6</b>	BACKMOUNT FRAME 6 WAY 50MM DEEP	EA	1
<b>DMF11</b>	BACKMOUNT FRAME 11 WAY 50MM DEEP	EA	1

## TELCO PANELS

PATCH PANEL TELCO 19 INCH 1RU 50 PORT

Unit: EA Qty: 1



### Part No. PP50TELCO

- 8 Position 4 Contact - Australian and New Zealand Standard Carrier Telephone connection
- Used for patching voice networks
- A-Tick compliant
- Supplied with cage nuts and screws



## TELCO CONNECTION BOXES INTERNAL



- For internal use - standard Backmount frame included
- Fits standard S-Net Backmount module
- Disconnect modules sold separately: DMP10



Part No.	Description	Unit	Qty
<b>CB3</b>	CONNECTION BOX CABOX 3 MODULE 30PR	EA	1
<b>CB5</b>	CONNECTION BOX CABOX 5 MODULE 50PR	EA	1
<b>CB10</b>	CONNECTION BOX CABOX 10 MODULE 100PR	EA	1

# NETWORK CABLING

## TELCO CONNECTION BOXES EXTERNAL



- Robust design with internal seal strip
- For external use - IP56
- Supplied with glands to seal cable outlets
- Disconnect modules sold separately: DMP10

Part No.	Description	Unit	Qty
<b>UB3</b>	CONNECTION BOX CABOX EXT 3 MODULE 30PR	EA	1
<b>UB5</b>	CONNECTION BOX CABOX EXT 5 MODULE 50PR	EA	1
<b>UB10</b>	CONNECTION BOX CABOX EXT 10 MODULE 100PR	EA	1

## TELCO PLUGS AND CORDS



- Used for testing and monitoring a circuit on S-Net modules
- Will not break the circuit
- Length: 3M

Part No.	Description	Unit	Qty
<b>TC2</b>	CORD TEST AND PATCH 2 POLE	EA	1
<b>TC4</b>	CORD TEST AND PATCH 4 POLE	EA	1

## CAT6 PATCH LEADS

### CAT6 BEIGE



- Cat6 patch lead made from 24AWG stranded bare copper wire with fully moulded strain relief boot
- Snagless connectors reduce accidental unplugging
- Compliance: RCM/A-Tick (S008), TIA-568-C.2 cat6, RoHS
- Colour: Beige



Part No.	Description	Unit	Qty
<b>PLC6BE0.5</b>	PATCH LEAD CAT6 BEIGE 0.5M	EA	1
<b>PLC6BE1</b>	PATCH LEAD CAT6 BEIGE 1M	EA	1
<b>PLC6BE1.5</b>	PATCH LEAD CAT6 BEIGE 1.5M	EA	1
<b>PLC6BE2</b>	PATCH LEAD CAT6 BEIGE 2M	EA	1
<b>PLC6BE3</b>	PATCH LEAD CAT6 BEIGE 3M	EA	1
<b>PLC6BE5</b>	PATCH LEAD CAT6 BEIGE 5M	EA	1
<b>PLC6BE10</b>	PATCH LEAD CAT6 BEIGE 10M	EA	1
<b>PLC6BE20</b>	PATCH LEAD CAT6 BEIGE 20M	EA	1

## CAT6 BLACK



- Cat6 patch lead made from 24AWG stranded bare copper wire with fully moulded strain relief boot
- Snagless connectors reduce accidental unplugging
- Compliance: RCM/A-Tick (S008), TIA-568-C.2 Cat6, RoHS
- Colour: Black



Part No.	Description	Unit	Qty
<b>PLC6BK0.5</b>	PATCH LEAD CAT6 BLACK 0.5M	EA	1
<b>PLC6BK1</b>	PATCH LEAD CAT6 BLACK 1M	EA	1
<b>PLC6BK1.5</b>	PATCH LEAD CAT6 BLACK 1.5M	EA	1
<b>PLC6BK2</b>	PATCH LEAD CAT6 BLACK 2M	EA	1
<b>PLC6BK3</b>	PATCH LEAD CAT6 BLACK 3M	EA	1
<b>PLC6BK5</b>	PATCH LEAD CAT6 BLACK 5M	EA	1
<b>PLC6BK10</b>	PATCH LEAD CAT6 BLACK 10M	EA	1
<b>PLC6BK20</b>	PATCH LEAD CAT6 BLACK 20M	EA	1

## CAT6 BLUE



- Cat6 patch lead made from 24AWG stranded bare copper wire with fully moulded strain relief boot
- Snagless connectors reduce accidental unplugging
- Compliance: RCM/A-Tick (S008), TIA-568-C.2 Cat6, RoHS
- Colour: Blue



Part No.	Description	Unit	Qty
<b>PLC6BL0.5</b>	PATCH LEAD CAT6 BLUE 0.5M	EA	1
<b>PLC6BL1</b>	PATCH LEAD CAT6 BLUE 1M	EA	1
<b>PLC6BL1.5</b>	PATCH LEAD CAT6 BLUE 1.5M	EA	1
<b>PLC6BL2</b>	PATCH LEAD CAT6 BLUE 2M	EA	1
<b>PLC6BL3</b>	PATCH LEAD CAT6 BLUE 3M	EA	1
<b>PLC6BL5</b>	PATCH LEAD CAT6 BLUE 5M	EA	1
<b>PLC6BL10</b>	PATCH LEAD CAT6 BLUE 10M	EA	1
<b>PLC6BL20</b>	PATCH LEAD CAT6 BLUE 20M	EA	1

# NETWORK CABLING

## CAT6 GREEN



- Cat6 patch lead made from 24AWG stranded bare copper wire with fully moulded strain relief boot
- Snagless connectors reduce accidental unplugging
- Compliance: RCM/A-Tick (S008), TIA-568-C.2 Cat6, RoHS
- Colour: Green



Part No.	Description	Unit	Qty
<b>PLC6GN0.5</b>	PATCH LEAD CAT6 GREEN 0.5M	EA	1
<b>PLC6GN1</b>	PATCH LEAD CAT6 GREEN 1M	EA	1
<b>PLC6GN1.5</b>	PATCH LEAD CAT6 GREEN 1.5M	EA	1
<b>PLC6GN2</b>	PATCH LEAD CAT6 GREEN 2M	EA	1
<b>PLC6GN3</b>	PATCH LEAD CAT6 GREEN 3M	EA	1
<b>PLC6GN5</b>	PATCH LEAD CAT6 GREEN 5M	EA	1
<b>PLC6GN10</b>	PATCH LEAD CAT6 GREEN 10M	EA	1
<b>PLC6GN20</b>	PATCH LEAD CAT6 GREEN 20M	EA	1

## CAT6 GREY



- Cat6 patch lead made from 24AWG stranded bare copper wire with fully moulded strain relief boot
- Snagless connectors reduce accidental unplugging
- Compliance: RCM/A-Tick (S008), TIA-568-C.2 Cat6, RoHS
- Colour: Grey



Part No.	Description	Unit	Qty
<b>PLC6GY0.5</b>	PATCH LEAD CAT6 GREY 0.5M	EA	1
<b>PLC6GY1</b>	PATCH LEAD CAT6 GREY 1M	EA	1
<b>PLC6GY1.5</b>	PATCH LEAD CAT6 GREY 1.5M	EA	1
<b>PLC6GY2</b>	PATCH LEAD CAT6 GREY 2M	EA	1
<b>PLC6GY3</b>	PATCH LEAD CAT6 GREY 3M	EA	1
<b>PLC6GY5</b>	PATCH LEAD CAT6 GREY 5M	EA	1
<b>PLC6GY10</b>	PATCH LEAD CAT6 GREY 10M	EA	1
<b>PLC6GY20</b>	PATCH LEAD CAT6 GREY 20M	EA	1

## CAT6 ORANGE



- Cat6 patch lead made from 24AWG stranded bare copper wire with fully moulded strain relief boot
- RCM/A-Tick Compliant
- Snagless connectors reduce accidental unplugging
- Colour: Orange



Part No.	Description	Unit	Qty
<b>PLC6OR0.5</b>	PATCH LEAD CAT6 ORANGE 0.5M	EA	1
<b>PLC6OR1</b>	PATCH LEAD CAT6 ORANGE 1M	EA	1
<b>PLC6OR1.5</b>	PATCH LEAD CAT6 ORANGE 1.5M	EA	1
<b>PLC6OR2</b>	PATCH LEAD CAT6 ORANGE 2M	EA	1
<b>PLC6OR3</b>	PATCH LEAD CAT6 ORANGE 3M	EA	1
<b>PLC6OR5</b>	PATCH LEAD CAT6 ORANGE 5M	EA	1
<b>PLC6OR10</b>	PATCH LEAD CAT6 ORANGE 10M	EA	1

## CAT6 PINK



- Cat6 patch lead made from 24AWG stranded bare copper wire with fully moulded strain relief boot
- RCM/A-Tick Compliant
- Snagless connectors reduce accidental unplugging
- Colour: Pink



Part No.	Description	Unit	Qty
<b>PLC6PK0.5</b>	PATCH LEAD CAT6 PINK 0.5M	EA	1
<b>PLC6PK1</b>	PATCH LEAD CAT6 PINK 1M	EA	1
<b>PLC6PK1.5</b>	PATCH LEAD CAT6 PINK 1.5M	EA	1
<b>PLC6PK2</b>	PATCH LEAD CAT6 PINK 2M	EA	1
<b>PLC6PK3</b>	PATCH LEAD CAT6 PINK 3M	EA	1
<b>PLC6PK5</b>	PATCH LEAD CAT6 PINK 5M	EA	1
<b>PLC6PK10</b>	PATCH LEAD CAT6 PINK 10M	EA	1

## CAT6 PURPLE



- Cat6 patch lead made from 24AWG stranded bare copper wire with fully moulded strain relief boot
- RCM/A-Tick Compliant
- Snagless connectors reduce accidental unplugging
- Colour: Purple



Part No.	Description	Unit	Qty
<b>PLC6PU0.5</b>	PATCH LEAD CAT6 PURPLE 0.5M	EA	1
<b>PLC6PU1</b>	PATCH LEAD CAT6 PURPLE 1M	EA	1
<b>PLC6PU1.5</b>	PATCH LEAD CAT6 PURPLE 1.5M	EA	1
<b>PLC6PU2</b>	PATCH LEAD CAT6 PURPLE 2M	EA	1
<b>PLC6PU3</b>	PATCH LEAD CAT6 PURPLE 3M	EA	1
<b>PLC6PU5</b>	PATCH LEAD CAT6 PURPLE 5M	EA	1
<b>PLC6PU10</b>	PATCH LEAD CAT6 PURPLE 10M	EA	1

## CAT6 RED



- Cat6 patch lead made from 24AWG stranded bare copper wire with fully moulded strain relief boot
- RCM/A-Tick Compliant
- Snag-less connectors reduce accidental un-plugging
- Colour: Red



Part No.	Description	Unit	Qty
<b>PLC6RD0.5</b>	PATCH LEAD CAT6 RED 0.5M	EA	1
<b>PLC6RD1</b>	PATCH LEAD CAT6 RED 1M	EA	1
<b>PLC6RD1.5</b>	PATCH LEAD CAT6 RED 1.5M	EA	1
<b>PLC6RD2</b>	PATCH LEAD CAT6 RED 2M	EA	1
<b>PLC6RD3</b>	PATCH LEAD CAT6 RED 3M	EA	1
<b>PLC6RD5</b>	PATCH LEAD CAT6 RED 5M	EA	1
<b>PLC6RD10</b>	PATCH LEAD CAT6 RED 10M	EA	1
<b>PLC6RD20</b>	PATCH LEAD CAT6 RED 20M	EA	1

# NETWORK CABLING

## CAT6 WHITE



- Cat6 patch lead made from 24AWG stranded bare copper wire with fully moulded strain relief boot
- RCM/A-Tick Compliant
- Snagless connectors reduce accidental unplugging
- Colour: White



Part No.	Description	Unit	Qty
<b>PLC6WH0.5</b>	PATCH LEAD CAT6 WHITE 0.5M	EA	1
<b>PLC6WH1</b>	PATCH LEAD CAT6 WHITE 1M	EA	1
<b>PLC6WH2</b>	PATCH LEAD CAT6 WHITE 2M	EA	1
<b>PLC6WH3</b>	PATCH LEAD CAT6 WHITE 3M	EA	1
<b>PLC6WH5</b>	PATCH LEAD CAT6 WHITE 5M	EA	1
<b>PLC6WH10</b>	PATCH LEAD CAT6 WHITE 10M	EA	1
<b>PLC6WH20</b>	PATCH LEAD CAT6 WHITE 20M	EA	1

## CAT6 YELLOW



- Cat6 patch lead made from 24AWG stranded bare copper wire with fully moulded strain relief boot
- RCM/A-Tick Compliant
- Snagless connectors reduce accidental unplugging
- Colour: Yellow



Part No.	Description	Unit	Qty
<b>PLC6YL0.5</b>	PATCH LEAD CAT6 YELLOW 0.5M	EA	1
<b>PLC6YL1</b>	PATCH LEAD CAT6 YELLOW 1M	EA	1
<b>PLC6YL1.5</b>	PATCH LEAD CAT6 YELLOW 1.5M	EA	1
<b>PLC6YL2</b>	PATCH LEAD CAT6 YELLOW 2M	EA	1
<b>PLC6YL3</b>	PATCH LEAD CAT6 YELLOW 3M	EA	1
<b>PLC6YL5</b>	PATCH LEAD CAT6 YELLOW 5M	EA	1
<b>PLC6YL10</b>	PATCH LEAD CAT6 YELLOW 10M	EA	1
<b>PLC6YL20</b>	PATCH LEAD CAT6 YELLOW 20M	EA	1

## CAT6A BLACK



- Factory tested to cat6A patch lead performance standard to ensure quality and reliability
- Shielding: Overall braid plus ea pair individually foil shielded
- RCM/A-Tick Compliant
- Colour: Black



Part No.	Description	Unit	Qty
<b>PLC6ABK0.5</b>	PATCH LEAD CAT6A SHIELDED BLACK 0.5M	EA	1
<b>PLC6ABK1</b>	PATCH LEAD CAT6A SHIELDED BLACK 1M	EA	1
<b>PLC6ABK1.5</b>	PATCH LEAD CAT6A SHIELDED BLACK 1.5M	EA	1
<b>PLC6ABK2</b>	PATCH LEAD CAT6A SHIELDED BLACK 2M	EA	1
<b>PLC6ABK3</b>	PATCH LEAD CAT6A SHIELDED BLACK 3M	EA	1
<b>PLC6ABK5</b>	PATCH LEAD CAT6A SHIELDED BLACK 5M	EA	1
<b>PLC6ABK10</b>	PATCH LEAD CAT6A SHIELDED BLACK 10M	EA	1



## CAT6A PATCH LEADS

### CAT6A BLUE



- Factory tested to cat6A patch lead performance standard to ensure quality and reliability
- Shielding: Overall braid plus ea pair individually foil shielded
- RCM/A-Tick Compliant
- Colour: Blue



Part No.	Description	Unit	Qty
<b>PLC6ABL0.5</b>	PATCH LEAD CAT6A SHIELDED BLUE 0.5M	EA	1
<b>PLC6ABL1</b>	PATCH LEAD CAT6A SHIELDED BLUE 1M	EA	1
<b>PLC6ABL1.5</b>	PATCH LEAD CAT6A SHIELDED BLUE 1.5M	EA	1
<b>PLC6ABL2</b>	PATCH LEAD CAT6A SHIELDED BLUE 2M	EA	1
<b>PLC6ABL3</b>	PATCH LEAD CAT6A SHIELDED BLUE 3M	EA	1
<b>PLC6ABL5</b>	PATCH LEAD CAT6A SHIELDED BLUE 5M	EA	1
<b>PLC6ABL10</b>	PATCH LEAD CAT6A SHIELDED BLUE 10M	EA	1

### CAT6A GREEN



- Factory tested to cat6A patch lead performance standard to ensure quality and reliability
- Shielding: Overall braid plus ea pair individually foil shielded
- RCM/A-Tick Compliant
- Colour: Green



Part No.	Description	Unit	Qty
<b>PLC6AGN0.5</b>	CAT6A SHIELDED GREEN PATCH LEAD 0.5M	EA	1
<b>PLC6AGN1</b>	CAT6A SHIELDED GREEN PATCH LEAD 1M	EA	1
<b>PLC6AGN2</b>	CAT6A SHIELDED GREEN PATCH LEAD 2M	EA	1
<b>PLC6AGN3</b>	CAT6A SHIELDED GREEN PATCH LEAD 3M	EA	1
<b>PLC6AGN5</b>	CAT6A SHIELDED GREEN PATCH LEAD 5M	EA	1
<b>PLC6AGN10</b>	CAT6A SHIELDED GREEN PATCH LEAD 10M	EA	1

### CAT6A GREY



- Factory tested to cat6A patch lead performance standard to ensure quality and reliability
- Shielding: Overall braid plus ea pair individually foil shielded
- RCM/A-Tick Compliant
- Colour: Grey



Part No.	Description	Unit	Qty
<b>PLC6AGY0.5</b>	PATCH LEAD CAT6A SHIELDED GREY 0.5M	EA	1
<b>PLC6AGY1</b>	PATCH LEAD CAT6A SHIELDED GREY 1M	EA	1
<b>PLC6AGY1.5</b>	PATCH LEAD CAT6A SHIELDED GREY 1.5M	EA	1
<b>PLC6AGY2</b>	PATCH LEAD CAT6A SHIELDED GREY 2M	EA	1
<b>PLC6AGY3</b>	PATCH LEAD CAT6A SHIELDED GREY 3M	EA	1
<b>PLC6AGY5</b>	PATCH LEAD CAT6A SHIELDED GREY 5M	EA	1
<b>PLC6AGY10</b>	PATCH LEAD CAT6A SHIELDED GREY 10M	EA	1

# NETWORK CABLING

## CAT6A PURPLE



- Factory tested to cat6A patch lead performance standard to ensure quality and reliability
- Shielding: Overall braid plus ea pair individually foil shielded
- RCM/A-Tick Compliant
- Colour: Purple



Part No.	Description	Unit	Qty
<b>PLC6APU0.5</b>	CAT6A SHIELDED PURPLE PATCH LEAD 0.5M	EA	1
<b>PLC6APU1</b>	CAT6A SHIELDED PURPLE PATCH LEAD 1M	EA	1
<b>PLC6APU2</b>	CAT6A SHIELDED PURPLE PATCH LEAD 2M	EA	1
<b>PLC6APU3</b>	CAT6A SHIELDED PURPLE PATCH LEAD 3M	EA	1
<b>PLC6APU5</b>	CAT6A SHIELDED PURPLE PATCH LEAD 5M	EA	1
<b>PLC6APU10</b>	CAT6A SHIELDED PURPLE PATCH LEAD 10M	EA	1

## CAT6A RED



- Factory tested to cat6A patch lead performance standard to ensure quality and reliability
- Shielding: Overall braid plus ea pair individually foil shielded
- RCM/A-Tick Compliant
- Colour: Red



Part No.	Description	Unit	Qty
<b>PLC6ARD0.5</b>	CAT6A SHIELDED RED PATCH LEAD 0.5M	EA	1
<b>PLC6ARD1</b>	CAT6A SHIELDED RED PATCH LEAD 1M	EA	1
<b>PLC6ARD2</b>	CAT6A SHIELDED RED PATCH LEAD 2M	EA	1
<b>PLC6ARD3</b>	CAT6A SHIELDED RED PATCH LEAD 3M	EA	1
<b>PLC6ARD5</b>	CAT6A SHIELDED RED PATCH LEAD 5M	EA	1
<b>PLC6ARD10</b>	CAT6A SHIELDED RED PATCH LEAD 10M	EA	1

## CAT6A WHITE



- Factory tested to cat6A patch lead performance standard to ensure quality and reliability
- Shielding: Overall braid plus ea pair individually foil shielded
- RCM/A-Tick Compliant
- Colour: White



Part No.	Description	Unit	Qty
<b>PLC6AWH0.5</b>	PATCH LEAD CAT6A SHIELDED WHITE 0.5M	EA	1
<b>PLC6AWH1</b>	PATCH LEAD CAT6A SHIELDED WHITE 1M	EA	1
<b>PLC6AWH1.5</b>	PATCH LEAD CAT6A SHIELDED WHITE 1.5M	EA	1
<b>PLC6AWH2</b>	PATCH LEAD CAT6A SHIELDED WHITE 2M	EA	1
<b>PLC6AWH3</b>	PATCH LEAD CAT6A SHIELDED WHITE 3M	EA	1
<b>PLC6AWH5</b>	PATCH LEAD CAT6A SHIELDED WHITE 5M	EA	1
<b>PLC6AWH10</b>	PATCH LEAD CAT6A SHIELDED WHITE 10M	EA	1

## CAT6A BEIGE



- Factory tested to cat6A patch lead performance standard to ensure quality and reliability
- Shielding: Overall braid plus ea pair individually foil shielded
- RCM/A-Tick Compliant
- Colour: Beige

Part No.	Description	Unit	Qty
<b>PLC6ABE0.5</b>	PATCH LEAD CAT6A SHIELDED BEIGE 0.5M	EA	1
<b>PLC6ABE1</b>	PATCH LEAD CAT6A SHIELDED BEIGE 1M	EA	1
<b>PLC6ABE1.5</b>	PATCH LEAD CAT6A SHIELDED BEIGE 1.5M	EA	1
<b>PLC6ABE2</b>	PATCH LEAD CAT6A SHIELDED BEIGE 2M	EA	1
<b>PLC6ABE3</b>	PATCH LEAD CAT6A SHIELDED BEIGE 3M	EA	1
<b>PLC6ABE5</b>	PATCH LEAD CAT6A SHIELDED BEIGE 5M	EA	1
<b>PLC6ABE10</b>	PATCH LEAD CAT6A SHIELDED BEIGE 10M	EA	1

## CAT6A YELLOW



- Factory tested to cat6A patch lead performance standard to ensure quality and reliability
- Shielding: Overall braid plus ea pair individually foil shielded
- RCM/A-Tick Compliant
- Colour: Yellow



Part No.	Description	Unit	Qty
<b>PLC6AYL0.5</b>	PATCH LEAD CAT6A SHIELDED YELLOW 0.5M	EA	1
<b>PLC6AYL1</b>	PATCH LEAD CAT6A SHIELDED YELLOW 1M	EA	1
<b>PLC6AYL1.5</b>	PATCH LEAD CAT6A SHIELDED YELLOW 1.5M	EA	1
<b>PLC6AYL2</b>	PATCH LEAD CAT6A SHIELDED YELLOW 2M	EA	1
<b>PLC6AYL3</b>	PATCH LEAD CAT6A SHIELDED YELLOW 3M	EA	1
<b>PLC6AYL5</b>	PATCH LEAD CAT6A SHIELDED YELLOW 5M	EA	1
<b>PLC6AYL10</b>	PATCH LEAD CAT6A SHIELDED YELLOW 10M	EA	1

## LAN CABLE ROLLS

### UTP LAN CABLE ROLLS

DATA CABLE CAT6A F/FTP SOLID VIOLET LSZH

Unit: ROL Qty: 305



#### Part No. C6AF/FTP

- Cat6A solid conductor shielded F/FTP cable for horizontal cabling installations
- LSZH jacket Violet
- Shielding: F/FTP individual and overall foil with drain wire
- Conductor: 23 AWG Solid Bare Copper
- ACMA A-Tick Certified



### UTP CAT6

DATA CABLE CAT6 UTP SOLID BLUE 305M

Unit: BOX Qty: 1



#### Part No. C6UTP

- Cat6 solid core cable best used for fixed runs in walls
- Better signal performance than stranded
- RCM/A-Tick compliant
- Colour: Blue
- Length: 305M Reel



# NETWORK CABLING

DATA CABLE CAT6 UTP STRANDED BLUE 305M

Unit: BOX Qty: 1



**Part No. C6UTPS**

- Cat6 stranded cable best used for patch leads
- More pliable than solid core cable
- RCM/A-Tick Compliant
- Colour: Blue
- Length: 305M Reel



## CAT6 CLIPSAL STYLE JACK



- Cat6 RJ45 white jack fits directly into Clipsal wall plate
- KATT style termination
- Wiring label for both 568A and 568B wiring formats
- RCM/A-Tick compliant



Part No.	Description	Unit	Qty
<b>J6/10</b>	JACK CAT6 K/110	PAK	10
<b>J6/50</b>	JACK CAT6 K/110 50PK	PAK	50
<b>J6BK/10</b>	JACK CAT6 KATT 10PK BLACK	PAK	10

## CAT6A SHIELDED KEYSTONE JACK



- Fully shielded to minimise noise and ensure cat6A performance is met
- Toolless termination method reduces installation time
- Keystone footprint
- RCM/A-Tick compliant



Part No.	Description	Unit	Qty
<b>J6AS</b>	CAT6A SHIELDED KEYSTONE JACK 10GB	EA	1
<b>J6A/10S</b>	CAT6A SHIELDED KEYSTONE JACK 10GB	PAK	10

## WALL PLATES



- Standard screw centres to fit most electrical plates and mounting blocks
- Compatible with Clipsal style mechs and jacks
- Fits most mounting blocks
- Colour: White
- 1 to 6 gang style available



Part No.	Description	Unit	Qty
<b>WPC-1</b>	WALL PLATE 1 GANG	EA	1
<b>WPC-2</b>	WALL PLATE 2 GANG	EA	1
<b>WPC-3</b>	WALL PLATE 3 GANG	EA	1
<b>WPC-4</b>	WALL PLATE 4 GANG	EA	1
<b>WPC-5</b>	WALL PLATE 5 GANG	EA	1
<b>WPC-6</b>	WALL PLATE 6 GANG	EA	1

WALL MOUNT BLOCK 13MM WHITE

Unit: EA Qty: 1



**Part No. WPC-MB13MM**

- Standard screw centres to fit most electrical plates and mounting blocks
- Wall mount block also available in 35mm
- Colour: White
- Blank plate also available

WALL MOUNT BLOCK 35MM WHITE

Unit: EA Qty: 1



**Part No. WPC-MB35MM**

- Standard screw centres to fit most electrical plates and mounting blocks
- Wall mount block also available in 13mm
- Colour: White
- Blank plate also available

## AV MECHS, MOUNTING BLOCKS AND C-CLIPS

WALL PLATE MEDIA BULL NOSE WHITE

Unit: EA Qty: 1



**Part No. WPC-BNOSE**

- Neat and tidy way to run cables through your wall - perfect for home theatre systems
- Standard screw centres to fit most electrical plates and mounting
- Standard and reverse design available
- Colour: White

WALL PLATE MEDIA BULL NOSE WHITE REVERSE

Unit: EA Qty: 1



**Part No. WPC-BNOSER**

- Neat and tidy way to run cables through your wall - perfect for home theatre systems
- Standard screw centres to fit most electrical plates and mounting
- Standard and reverse design available
- Colour: White

## LINE SPLITTERS

### S-NET SPLITTERS

DONGLE SPLITTER 2 TO 1 UTP

Unit: EA Qty: 1



**Part No. 42LAUTP**

- Generally used when running another UTP cable
- Must be used in pairs
- Dongle version
- RJ45 plug to 2 by RJ45 sockets

# NETWORK CABLING

## PATCH PANELS

### CAT5E PATCH PANEL

PATCH PANEL CAT5E REMOVABLE ID 24 PORT

Unit: EA Qty: 1



**Part No. PP24C5E**

- Handy replaceable label strips
- Sturdy metal construction
- Conforms with EIA/TIA568A/B C5 Standards
- Supplied with cage nuts, screws, washers & ties

### CAT6 PATCH PANEL

PATCH PANEL CAT6 24 PORT

Unit: EA Qty: 1



**Part No. PC624P**

- Replaceable ID strips - no need for a labelling machine
- Rear cable management bar
- Wiring label for both 568A and 568B wiring formats
- KATT style termination
- Includes cable ties, cage nuts, screws and washers



PATCH PANEL CAT6 REMOVABLE ID 24 PORT

Unit: EA Qty: 1



**Part No. PP24C6**

- Sturdy metal construction
- Handy replaceable label strips
- Rear cable management bar and cable ties included
- ACMA/RCM compliant



### CAT6A PATCH PANEL

24PORT K/STONE UNLOADED SHIELDED P/PANEL

Unit: EA Qty: 1



**Part No. PP24-USK**

- Fully shielded design, patch panel made entirely from metal.
- Compatible with cat5E, cat6, cat6A and cat7 keystone jacks
- Includes removable rear cable management bar and earth lead
- Use with CABAC J6AS and J6A/10S cat6A shielded keystone jacks



# Connectors

RJ Connectors	20
Telephone Sockets, Adaptors, leads and ADSL splitters	22

# CONNECTORS

## RJ CONNECTORS

### RJ11/RJ12 ROUND STRANDED



- Modular RJ plug for voice applications
- High quality pin with 50um gold plating
- Low contact resistance
- ACA approved



Part No.	Description	Unit	Qty
<b>0644RST-X</b>	PLUG ROUND STRANDED RJ11 4P4C 10PK	EA	1
<b>0644RST-C</b>	PLUG ROUND STRANDED RJ11 4P4C 100PK	EA	1
<b>0664RST-X</b>	PLUG ROUND STRANDED RJ12 6P4C 10PK	EA	1
<b>0664RST-C</b>	PLUG ROUND STRANDED RJ12 6P4C 100PK	EA	1
<b>0666RST-X</b>	PLUG ROUND STRANDED RJ12 6P6C 10PK	EA	1
<b>0666RST-C</b>	PLUG ROUND STRANDED RJ12 6P6C 100PK	EA	1

### RJ11/RJ12 ROUND SOLID



- Modular RJ11/RJ12 round solid plug for voice applications
- High quality pin with 50um gold plating
- Low contact resistance
- ACA approved



Part No.	Description	Unit	Qty
<b>0644RSL-X</b>	RJ11 ROUND SOLID PLUG 4P4C 10PK	EA	1
<b>0644RSL-C</b>	RJ11 ROUND SOLID PLUG 4P4C 100PK	EA	1
<b>0664RSL-X</b>	RJ12 ROUND SOLID PLUG 6P4C 10PK	EA	1
<b>0664RSL-C</b>	RJ12 ROUND SOLID PLUG 6P4C 100PK	EA	1
<b>0666RSL-X</b>	RJ12 ROUND SOLID PLUG 6P6C 10PK	EA	1
<b>0666RSL-C</b>	RJ12 ROUND SOLID PLUG 6P6C 100PK	EA	1



## RJ11/RJ12 FLAT STRANDED



- Modular RJ plug for voice applications
- High quality pin with 50um gold plating
- Low contact resistance
- ACA approved



Part No.	Description	Unit	Qty
<b>0644FST-C</b>	PLUG FLAT STRANDED RJ11 4P4C 100PK	EA	1
<b>0664FST-X</b>	PLUG FLAT STRANDED RJ12 6P4C 10PK	EA	1
<b>0664FST-C</b>	PLUG FLAT STRANDED RJ12 6P4C 100PK	EA	1
<b>0666FST-X</b>	PLUG FLAT STRANDED RJ12 6P6C 10PK	EA	1
<b>0666FST-C</b>	PLUG FLAT STRANDED RJ12 6P6C 100PK	EA	1

## CAT6 UNSHIELDED



- Unshielded Modular RJ45 Plug with 50um gold plated pins for solid or stranded cat6 cable
- Conductor O.D. range: 1.09mm to 1.15mm
- Low contact resistance
- Pack of 50



Part No.	Description	Unit	Qty
<b>C68P8CUS2P-L</b>	PLUG CAT6 8P8C UN-SHIELDED 2 PIECE 50PK	EA	1

# CONNECTORS

## CAT6 SHIELDED



- Modular RJ plug for cat6 data applications
- Conductor O.D. range: 1.09mm to 1.15mm
- High quality pin with 50um gold plating
- Low contact resistance
- Pack of 10



Part No.	Description	Unit	Qty
<b>C68P8CS2P-X</b>	PLUG CAT6 8P8C SHIELDED 2 PIECE 10PK	EA	1
<b>C68P8CS2P-L</b>	PLUG CAT6 8P8C SHIELDED 2 PIECE 50PK	EA	1

## TELEPHONE SOCKETS, ADAPTORS, LEADS AND ADSL SPLITTERS

### ADAPTORS AND COUPLERS

COUPLER RJ12 T F-F ADAPTOR

Unit: EA Qty: 1



**Part No. 40RJ12FFF**

- Connect multiple line cords
- All RJ12 pinned one to one
- Female to female adaptor
- One to two connection

# Powerboards & Cords

Powerboards	24
Extension Cords	26

# POWERBOARDS & CORDS

## POWERBOARDS

### POWERBOARDS

POWERBOARD 240V WITH 2 X USB OUTLETS

Unit: EA Qty: 1



**Part No. PB1USB2**

- Slimline design with a single Australian and New Zealand power outlet
- Surge protection
- USB outlets suitable for charging USB devices
- Power status indicator

POWER ADAPTOR DOUBLE RIGHT HAND

Unit: EA Qty: 1



**Part No. PADRH1**

- Double the power outlets
- Ideal for domestic appliances
- 10amp rated
- For right side powerpoint - horizontal side by side

POWER ADAPTOR DOUBLE VERTICAL

Unit: EA Qty: 1



**Part No. PADV1**

- Double the power outlets
- Ideal for domestic appliances
- 10amp rated
- Vertical arrangement

POWERBOARD O/LOAD PROTECTION 4 WAY

Unit: EA Qty: 1



**Part No. PB7**

- Ideal for computer hardware, electrical equipment and domestic appliances
- 4 Outlets
- Overload protection
- 1m cord length

POWERBOARD 4 WAY W/ SWITCHES

Unit: EA Qty: 1



**Part No. PB4SW**

- Powerboard with individual switches
- 4 wide sockets suitable for power adaptors
- Overload protection with reset button for up to 4 appliances
- Flame retardant outer case with optional wall mounts

POWERBOARD SP 4 WAY W/ FOOT SWITCH

Unit: EA Qty: 1



**Part No. PBFS4**

- Unique design - switch off all equipment with just one foot press
- Surge protection
- 4x Australian power outlets
- Space saving right angled plug

POWERBOARD O/LOAD PROTECTION 6 WAY

Unit: EA Qty: 1



**Part No. PB8**

- Ideal for computer hardware, electrical equipment and domestic appliances
- 6 Outlets
- Overload protection
- 1m cord length

POWERBOARD SP O/LOAD 6 WAY W/ USB

Unit: EA Qty: 1



**Part No. PB6USB2**

- Slim sturdy design with space for a bulky battery charger, power pack or transformer
- Surge and overload protection
- USB outlets suitable for charging USB devices
- Space saving right angled plug

# POWERBOARDS & CORDS

POWERBOARD SP 6 WAY W/ SWITCHES

Unit: EA Qty: 1



**Part No. PB6SW**

- 6x Australian and New Zealand power outlets each with an individual switch
- Surge and overload protection
- EMI and RFI protection
- 2m power lead with right angled plug

POWER OUTLET 8 WAY W/ MAINS PHONE FILTER

Unit: EA Qty: 1



**Part No. PB80**

- 8 way powerboard
- Surge and overload protection
- COAX cable line protection
- Phone/ADSL line protection

## EXTENSION CORDS

### EXTENSION CORD 10A



- Power extension cord for household and office environment
- Australian and New Zealand standard insulated pins
- 10amp rated
- Colour: White

Part No.	Description	Unit	Qty
<b>ELD2</b>	EXTENSION LEAD HOUSE OFFICE 240V 10A 2M	EA	1
<b>ELD4</b>	EXTENSION LEAD HOUSE OFFICE 240V 10A 4M	EA	1
<b>ELD6</b>	EXTENSION LEAD HOUSE OFFICE 240V 10A 6M	EA	1
<b>ELD8</b>	EXTENSION LEAD HOUSE OFFICE 240V 10A 8M	EA	1
<b>ELD10</b>	EXTENSION LEAD HOUSE OFFICE 240V 10A 10M	EA	1
<b>ELD15</b>	EXTENSION LEAD HOUSE OFFICE 240V 10A 15M	EA	1
<b>ELD20</b>	EXTENSION LEAD HOUSE OFFICE 240V 10A 20M	EA	1

## EXTENSION CORD 10A PIGGY



- Power extension cord for household and office environment
- Extension lead with piggy back plug
- Australian and New Zealand standard insulated pins
- 10amp rated

Part No.	Description	Unit	Qty
<b>ELD1P</b>	EXT LEAD HSE/OFF 240V 10A PIGGY BK 1M	EA	1
<b>ELD2P</b>	EXT LEAD HSE/OFF 240V 10A PIGGY BK 2M	EA	1
<b>ELD4P</b>	EXT LEAD HSE/OFF 240V 10A PIGGY BK 4M	EA	1
<b>ELD6P</b>	EXT LEAD HSE/OFF 240V 10A PIGGY BK 6M	EA	1
<b>ELD10P</b>	EXT LEAD HSE/OFF 240V 10A PIGGY BK 10M	EA	1
<b>ELD15P</b>	EXT LEAD HSE/OFF 240V 10A PIGGY BK 15M	EA	1
<b>ELD20P</b>	EXT LEAD HSE/OFF 240V 10A PIGGY BK 20M	EA	1

## EXTENSION CORD 10A HD



- Heavy-duty extension cord
- See through plug and socket
- Australian and New Zealand standard insulated pins
- 10amp rated

Part No.	Description	Unit	Qty
<b>ELH10</b>	EXT LEAD HD 240V 10A CLEAR PLUG YL 10M	EA	1
<b>ELH15</b>	EXT LEAD HD 240V 10A CLEAR PLUG YL 15M	EA	1
<b>ELH20</b>	EXT LEAD HD 240V 10A CLEAR PLUG YL 20M	EA	1

# POWERBOARDS & CORDS

## EXTENSION CORD 10A INDUSTRIAL



- Industrial duty extension lead
- 10amp rated socket and plug with 15A rated cable
- Australian and New Zealand standard insulated pins
- See through plug and socket

Part No.	Description	Unit	Qty
<b>ELID20</b>	EXT LEAD HD 240V 10A CLEAR PLUG OR 20M	EA	1
<b>ELID30</b>	EXT LEAD HD 240V 10A CLEAR PLUG OR 30M	EA	1
<b>ELID35</b>	EXT LEAD HD 240V 10A CLEAR PLUG OR 35M	EA	1

## EXTENSION CORD 15A HD



- Heavy-duty extension lead
- See through plug and socket
- Australian and New Zealand standard insulated pins
- 15amp rated

Part No.	Description	Unit	Qty
<b>ELID15A10</b>	EXT LEAD HD 240V 15A CLEAR PLUG BL 10M	EA	1
<b>ELID15A15</b>	EXT LEAD HD 240V 15A CLEAR PLUG BL 15M	EA	1



# Network Hardware

Video Splitters and Switches	30
Extenders	30
Data Switches Unmanaged	30

# NETWORK HARDWARE

## VIDEO SPLITTERS AND SWITCHES

### VIDEO SPLITTERS

SPLITTER HDMI 4 PORT

Unit: EA Qty: 1



**Part No. HDMISP4P**

- Conveniently split 1 HDMI signal up to 4
- Signal integrity preserved
- Great for home use or commercial applications
- Supports 3D

### EXTENDERS

#### NETWORK-EXTENDERS

EXTENDER HDMI VIA RJ45

Unit: EA Qty: 1



**Part No. HDMIEXT**

- Compatible with HDTV resolutions 480i, 480p, 720p, 1080i and 1080p
- HDCP compliant
- Plug and play, installed in seconds
- Power adaptor for receiver unit supplied

### DATA SWITCHES UNMANAGED

#### SWITCH 10 100

SWITCH 10/100M 24 PORT

Unit: EA Qty: 1



**Part No. LSW24**

- Fast Ethernet switch standards: IEEE802.3 10Base-T, IEEE802.3u 100Base-TX, IEEE802.3x Flow Control
- 24 port switch 1RU
- 10BASE-T - UTP CAT3 or above, 100BASE-TX - UTP CAT5 or above
- Rack mountable

#### SWITCH 1GB

ETHERNET SWITCH GIGABIT R19 RM 24 PORT

Unit: EA Qty: 1



**Part No. LSW24G**

- A powerful and high-performance Gigabit Ethernet unmanaged switch with 24 x 10/100/1000Mbps ports
- Non-blocking supporting all switching port wire-speed performance
- Seamless migration to higher-speed networking
- Broadcast Storming Filter function

# Computer, Video & Audio Cables

USB Cables	32
Adaptors - Serial, USB, Video and TV	33
DVI Cables and Adaptors	33
HDMI Cables and Adaptors	34
Power Cables	34

## DVI Cables and Adaptors

### The Basics of DVI

DVI stands for **DIGITAL VIDEO INTERFACE** and is video interface technology designed to maximize the quality of flat panel LCD monitors and high-end video graphics cards. It is a replacement for the Plug & Display (P&D) standard, and a step up from the digital-only DFP format for older flat panels.

DVI is becoming increasingly popular with video card manufacturers, and most cards purchased include both a VGA and a DVI output port.

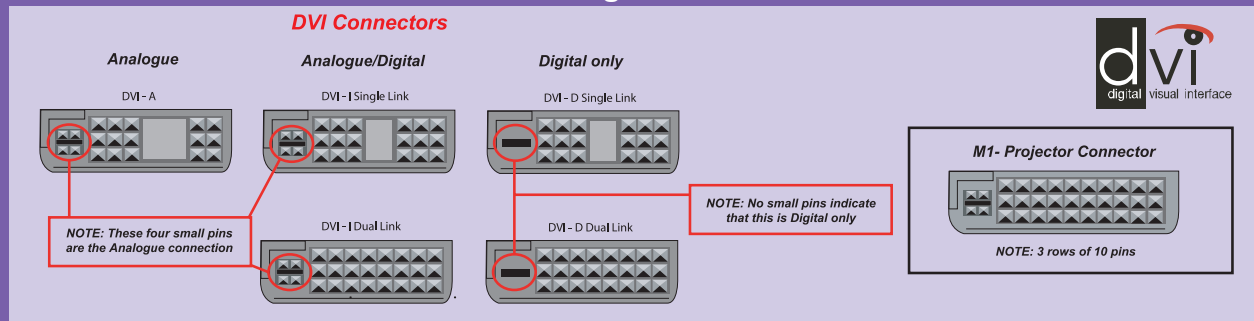
#### DVI FORMATS

- **DVI-D (Digital)** - This is a strictly digital high speed transfer typically from a video card to a digital LCD.
- **DVI-A (Analogue)** - This is an analogue signal, which has lesser quality and speed than DVI-D, and is basically VGA.
- **DVI-I (Integrated Digital/Analogue)** - Combines DVI-D and DVI-A in one cable.

#### SINGLE AND DUAL LINKS

Digital DVI can be **Single Link** or **Dual Link**. Dual Link effectively doubles the power of transmission giving much higher resolution. Unless your equipment is high end, and generally clearly marked Dual Link, it is likely to be Single Link, which covers most of the market. DVI-D and DVI-I cables can be Dual Link.

### How to Recognize a DVI Cable



## USB CABLES

### USB 2.0 A (M) TO B (M)



- Used for USB2.0 port equipped devices
- Black with gold tip
- USB type A to type B
- Colour: Black



Part No.	Description	Unit	Qty
<b>USB2AB2</b>	CABLE USB 2.0 A-B GOLD/P BLACK M-M 2M	EA	1
<b>USB2AB3</b>	CABLE USB 2.0 A-B GOLD/P BLACK M-M 3M	EA	1
<b>USB2AB5</b>	CABLE USB 2.0 A-B GOLD/P BLACK M-M 5M	EA	1

### USB 2.0 A TO A (M TO F) EXTENSION



- Used for USB2.0 port equipped devices
- USB type A male to type A female
- Colour: Black



Part No.	Description	Unit	Qty
<b>40USB2AMF2-BK</b>	CABLE EXT USB 2.0 A-A M-F BLACK 1.8M	EA	1
<b>40USB2AMF3-BK</b>	CABLE EXT USB 2.0 A-A M-F BLACK 3M	EA	1
<b>40USB2AMF5-BK</b>	CABLE EXT USB 2.0 A-A M-F BLACK 5M	EA	1

## USB 2.0 EXTENSION ACTIVE



- Regenerate the USB signal for maximum reliability and performance over extended distances
- Plug and play - no driver required
- USB 2.0 and 1.1 compliant
- Type A male to type A female

Part No.	Description	Unit	Qty
<b>USB2EXT-12M</b>	CABLE EXTENSION ACTIVE USB 2.0 12M	EA	1

## ADAPTORS - SERIAL, USB, VIDEO AND TV

### PAL AND F STYLE ADAPTORS AND JOINERS



- Adaptors to convert gender (male to female) and connector type (F, PAL, RCA)
- High quality nickel plated brass, machined or die cast
- Secure adaptor for good connection

Part No.	Description	Unit	Qty
<b>05AFFPF</b>	ADAPTOR F FEMALE TO PAL FEMALE	EA	1

### DVI D MALE TO MALE



- Covers 95 per cent of all DVI to DVI hook up requirements
- Suitable for all digital equipment
- Double shielded to ensure compliance with FCC requirements
- Gold plated Copper contacts to provide max connectivity

Part No.	Description	Unit	Qty
<b>40DVI-DMM1</b>	CABLE DVI-D DUAL LINK DIGITAL M-M 1M	EA	1
<b>40DVI-DMM3</b>	CABLE DVI-D DUAL LINK DIGITAL M-M 3M	EA	1
<b>40DVI-DMM5</b>	CABLE DVI-D DUAL LINK DIGITAL M-M 5M	EA	1
<b>40DVI-DMM10</b>	CABLE DVI-D DUAL LINK DIGITAL M-M 10M	EA	1

## DVI CABLES AND ADAPTORS

### DVI D MALE TO FEMALE EXTENSION CABLE

CABLE DVI-D DUAL LINK DIGITAL M-M 1.8M

Unit: EA Qty: 1



**Part No. 40DVI-DMM1.8**

- Covers 95 per cent of all DVI to DVI hook up requirements
- Suitable for all digital equipment
- Double shielded to ensure compliance with FCC requirements
- Gold plated Copper contacts to provide max connectivity

CABLE DVI-D DUAL LINK DIG M-F EXT 5M

Unit: EA Qty: 1



**Part No. 40DVI-DEXT5**

- Covers 95 per cent of all DVI to DVI hook up requirements
- Suitable for all digital equipment
- Double shielded to ensure compliance with FCC requirements

# COMPUTER, VIDEO AND AUDIO CABLES

## HDMI CABLES AND ADAPTORS

### HIGH SPEED HDMI M TO M



- HDMI type A to type A male-to-male High Speed cable with Ethernet channel
- Designed to support video resolutions of up to 4K
- Features include audio return channel (ARC), 3D and Deep Colour
- High Speed HDMI performance with a dedicated Ethernet channel



Part No.	Description	Unit	Qty
<b>40HDMI1.4MM0.5</b>	CABLE HDMI HIGH SPEED MALE-MALE 0.5M	EA	1
<b>40HDMI1.4MM1</b>	CABLE HDMI HIGH SPEED MALE-MALE 1M	EA	1
<b>40HDMI1.4MM2</b>	CABLE HDMI HIGH SPEED MALE-MALE 2M	EA	1
<b>40HDMI1.4MM3</b>	CABLE HDMI HIGH SPEED MALE-MALE 3M	EA	1
<b>40HDMI1.4MM5</b>	CABLE HDMI HIGH SPEED MALE-MALE 5M	EA	1
<b>40HDMI1.4MM10</b>	CABLE HDMI HIGH SPEED MALE-MALE 10M	EA	1
<b>40HDMI1.4MM15</b>	CABLE HDMI HIGH SPEED MALE-MALE 15M	EA	1

### LAPTOP FIGURE 8



- 2.5amp power cable with insulated pins that comply with Australian and New Zealand Standards
- 2 pin male plug to IEC C7 figure eight female socket for laptop
- Cable: 0.75mm<sup>2</sup>
- Socket and cord: Black



Part No.	Description	Unit	Qty
<b>PL240-8B0.5</b>	CABLE POWER FIGURE 8 0.5M	EA	1
<b>PL240-8B1</b>	CABLE POWER FIGURE 8 1M	EA	1
<b>PL240/8B</b>	CABLE POWER FIGURE 8 2M	EA	1
<b>PL240/8B5</b>	CABLE POWER FIGURE 8 5M	EA	1

### LAPTOP CLOVER LEAF



- 2.5amp power cable Australian and New Zealand 3 pin male plug to IEC C5 clover leaf female socket
- Cable: 0.75mm<sup>2</sup>
- Aus 3 pin plug, clover leaf socket and cord: Black



Part No.	Description	Unit	Qty
<b>PL240/CLB</b>	CABLE POWER CLOVER LEAF 2M	EA	1
<b>PL240/CLB5</b>	CABLE POWER CLOVER LEAF 5M	EA	1

## POWER CABLES

### 3 PIN PLUG TO IEC SOCKET (FEMALE)

CABLE COMPUTER NOT BAGGED BLACK 2M

Unit: EA Qty: 1



#### Part No. 3PIECBK

- 10amp power cable Australian and New Zealand 3 pin male plug to IEC C13 female socket - ideal for computer screens
- Cable: 0.75mm<sup>2</sup>
- Aus 3 pin plug, C13 socket and cord: Black
- Length: 2m

# COMPUTER, VIDEO AND AUDIO CABLES

CABLE COMPUTER R/ANGLED F BLACK 2M

Unit: EA Qty: 1



**Part No. 3PIECBKRA**

- 10amp power cable Australian and New Zealand 3 pin male plug to IEC C13 female socket - ideal for computer screens
- Cable: 0.75mm<sup>2</sup>
- Aus 3 pin plug, C13 socket and cord: Black
- Length: 2m

CABLE COMPUTER GREY 2M

Unit: EA Qty: 1



**Part No. 3PIECGY**

- 10amp computer power cable with an Australian and New Zealand 3 pin male plug to IEC C13 female socket - ideal for computer screens
- Cable: 0.75mm<sup>2</sup>
- Plug, C13 socket and cord: Grey
- Length: 2m



- 10amp Australian and New Zealand 3 pin male plug to IEC C13 female socket power cable - ideal for computer screens
- Cable: 0.75mm sq
- Aus 3 pin plug, C13 socket and cord: Black
- Supplied in a hang sell bag



Part No.	Description	Unit	Qty
<b>40IEC1</b>	CABLE POWER IEC 1M	EA	1
<b>40IEC2</b>	CABLE POWER IEC 2M	EA	1
<b>40IEC3</b>	CABLE POWER IEC 3M	EA	1
<b>40IEC5</b>	CABLE POWER IEC 5M	EA	1

## 3 PIN TO Y SPLIT



- 10amp Y split power cable with an Australian and New Zealand 3 pin male plug - ideal for computer screens
- Cable: 0.5m = 1mm<sup>2</sup> and 1.5m = 0.75mm<sup>2</sup>
- Plug, C13 sockets and cord: Black
- Length: 2m

Part No.	Description	Unit	Qty
<b>3PIECBKYF-1</b>	CABLE POWER Y SPLIT 2X IEC F BLACK 2M	EA	1

# COMPUTER, VIDEO AND AUDIO CABLES

## IEC (M) TO 3 PIN (F)



- 10 Amp power cable IEC C14 male plug to Australian and New Zealand 3 pin female socket
- Cable: 0.75mm<sup>2</sup>
- C14 plug, Aus 3 pin socket and cord : Black
- Supplied in a hang sell bag

Part No.	Description	Unit	Qty
<b>40UPSIEC150MM</b>	SOCKET POWER UPS IEC MALE TO 3PIN 150MM	EA	1
<b>40UPSIEC1.5M</b>	SOCKET POWER UPS IEC MALE TO 3 PIN 1.5M	EA	1

## IEC C14 (M) PLUG TO C13 (F) SOCKET



- 10 Amp power cable IEC C14 male plug to IEC C13 female socket - ideal for computer screens
- Cable: 0.75mm<sup>2</sup>
- C14 plug, C13 socket and cord: Black
- Supplied in a hang sell bag

Part No.	Description	Unit	Qty
<b>40IECMF0.5</b>	CABLE POWER IEC C13 TO C14 0.5M	EA	1
<b>40IECMF1</b>	CABLE POWER IEC C13 TO C14 1M	EA	1
<b>40IECMF2</b>	CABLE POWER IEC C13 TO C14 2M	EA	1
<b>40IECMF3</b>	CABLE POWER IEC C13 TO C14 3M	EA	1
<b>40IECMF5M</b>	CABLE POWER IEC C13 TO C14 5M	EA	1

## IEC C14 (M) PLUG TO C15 (F) SOCKET



- Power cable supplied in a hang sell bag
- Amp Rating: 10A. Cable: 1mm<sup>2</sup>
- C14 Plug, C15 Socket, cord: black

Part No.	Description	Unit	Qty
<b>40IEC141502</b>	CABLE POWER IEC C14 TO C15 2M	EA	1
<b>40IEC14151.5</b>	CABLE POWER IEC C14 TO C15 1.5M	EA	1

## IEC TO C19 C20



- 15amp power cable IEC C20 male plug to IEC C19 female socket
- Cable: 1mm<sup>2</sup> sq
- C20 plug, C19 socket and cord: Black
- Supplied in a hang sell bag

Part No.	Description	Unit	Qty
<b>40IEC19202</b>	CABLE POWER IEC C19 TO C20 2M	EA	1
<b>40IEC19205</b>	CABLE POWER IEC C19 TO C20 5M	EA	1



# Data Tools

LAN Cable Strippers	38
Punch Down Tools	38
RJ Crimpers	39
Splice Crimpers	39
Coax Tools	40
CATV Tools	41
COAX and CATV Cable Termination Tool Kits	41
LAN Tools and Testing Equipment	41

# DATA TOOLS

## LAN CABLE STRIPPERS

### TOOLS

DATA WIRE STRIPPER 3.2-9.5MM O.D.

Unit: EA Qty: 1



**Part No. KDAT**

- Strips the outer jacket of UTP and STP cables
- Strips multi strand phone/data cables from 3.2 to 9.5mm OD
- Strips flat cables from 2 to 10 pair
- Strips building wire up to 6mm<sup>2</sup>

DISPOSABLE UTP STRIPPER

Unit: EA Qty: 1



**Part No. KDAT1**

- For stripping wire diameters from 5.0 to 6.2mm
- Low cost disposable
- User friendly, ergonomic design

## PUNCH DOWN TOOLS

### PUNCH DOWN TOOLS

110 DISPOSABLE TOOL W/ STRIPPER

Unit: KIT Qty: 1



**Part No. 42110DST-1**

- Economy UTP strip and punch down tool
- Low cost - disposable
- 110 punch down only

PUNCH DOWN TOOL K/110

Unit: EA Qty: 1



**Part No. KPT1**

- Extra head is stored in a compartment in the top of the tool
- Includes a KATT and 110 punch down head
- Adjustable impact settings
- Robust general purpose tool

PRECISION K/110 PUNCHDOWN TOOL

Unit: EA Qty: 1



**Part No. KPT2**

- Extra head is stored in a compartment in the top of the tool
- Includes a KATT and 110 punch down head
- Adjustable impact settings
- Robust general purpose tool

## PRECISION K/110 PUNCHDOWN TOOL

Unit: EA Qty: 1



### Part No. KPT3

- KATT and 110 punch down tool
- Includes scissor cut off
- Built-in combination hook and blade
- Two tools in one head

## IMPACT PUNCH DOWN TOOL TERMINAL BLOCK

Unit: EA Qty: 1



### Part No. KPT4

- For use with K/110 style terminal block
- For use on K/110 style jacks and patch panels
- A very handy tool for the professional

## RJ CRIMPERS

### RJ CRIMPERS

#### CRIMP TOOL SUIT RJ11 RJ12 RJ45

Unit: EA Qty: 1



### Part No. 06CT468-1

- Crimps RJ11, RJ12 and RJ45
- Parallel crimping action for quality crimps
- Built-in ratchet to ensure crimp is complete before tool releases
- Proven industry standard tool

## PREC. CRIMPER FOR RJ12/RJ45

Unit: EA Qty: 1



### Part No. RJ1245

- Precision Crimper for RJ12 and RJ45 modular plugs
- Built in ratchet mechanism for reliable crimp results
- Ergonomic handles

## SPLICE CRIMPERS

### SPLICE CRIMPERS

#### TELECOMMUNICATIONS SPLICE CRIMPER

Unit: EA Qty: 1



### Part No. TELSP2

- Designed to crimp telecommunications approved, moisture resistant connectors
- Crimps grease filled UR, UY and UG connectors
- Parallel crimp action to ensure correct splicing

# DATA TOOLS

## COAX TOOLS

### COAX TOOLS

IDEAL COAX STRIPPER 3.2MM OD - GREY

Unit: EA Qty: 1



**Part No. 45-162**

- Small easy to use tool for stripping tubes from Loose Tube cables
- Cuts tubes up to 3.2mm (1/8 inch) O.D.
- Adjustable blades for easy operation

CRIMPER FOR RG58/59/6

Unit: EA Qty: 1



**Part No. HX2**

- Crimps RG6, RG58 and RG59/62
- Has position for crimping pin and shield to connector
- Hardened steel die
- Ratchet design

CABLE STRIPPER 2/2X 4.8 - 7.5

Unit: EA Qty: 1



**Part No. KOAX1**

- Ideal for common COAX cable type e.g. TV cable from 4.8 to 7.5mm diameter
- Strips without adjustment of the blade
- User friendly, ergonomic design

COAX 2 BLADE STRIPPER RG58/59/6

Unit: EA Qty: 1



**Part No. KOAX2**

- 2-step (2-blade) adjustable COAX stripper for RG58, 59, 6, 62 and 3, 4 and 5 core cable
- Strip depth is easily adjusted with the included Allen key
- Strip length can also be adjusted by moving the blades
- Strip length is adjustable from 4-12mm

COAX 3 BLADE STRIPPER RG58/59/6

Unit: EA Qty: 1



**Part No. KOAX3**

- 3-step (3-blade) adjustable COAX stripper for RG58, RG59 and RG6
- Strip depth is easily adjusted with the included Allen key
- Strip length can also be adjusted by moving the blades
- Strip length is adjustable from 6-8mm

## CATV TOOLS

### CATV CRIMPERS

CRIMPER FOR COMPRESSION CONNECTORS

Unit: EA Qty: 1



**Part No. FCOMT**

- Termination is accomplished in a single cyclic action providing a professional cost effective solution for F connector crimping
- To be used with compression type F connector
- For use with 05FMCOQ6 connectors

RG6 AND RG11 CRIMPER

Unit: EA Qty: 1



**Part No. RG6/11-CT**

- Includes a ratchet for correct crimping
- Crimps RG6 and RG11 F connectors
- Has 3 crimp positions one for pin and two for outers
- Used for cable TV applications

## COAX AND CATV CABLE TERMINATION TOOL KITS

### TERMINATION KITS

COAX CRIMPER STRIPPER CUTTER TOOL KIT

Unit: EA Qty: 1



**Part No. 05TK1**

- A COAX cable termination kit supplied in a handy case with crimp dies for most COAX cables
- Includes KOAX2 stripping tool, K10 cable cutters and COAX crimper
- Includes 5 sets of dies covering 23 sizes
- Dies are easily changed with the included screwdriver
- Can be used to crimp RG 58, 59, 6, 62, 140, 141, 142 and more

## LAN TOOLS AND TESTING EQUIPMENT

### LAN TESTERS

SMARTEST COMPACT CABLE NETWORK TESTER

Unit: EA Qty: 1



**Part No. 256653T**

- The most unique and intelligent pen style pocket sized tester on the market
- Unique split apart function remote and tester can be one/split
- LED indicators and built-in tone generator
- Tests for shorts, opens, crossed pairs, reversal, and split pairs
- DO NOT USE ON A LIVE CIRCUIT

LAN TESTER 10BASET 10BASE2 BNC/RJ

Unit: EA Qty: 1



**Part No. 35RJTS8**

- Primary use is for testing continuity, shorts and open circuits, individual cables and pairs of UTP or STP
- Remote display unit allows for viewing at either end
- Displays pairs and crossed pairs
- Includes LEDs for each wire ensuring easy pin configuration

# DATA TOOLS

NETFINDER TESTER TONEGENERATOR PORT FIND

Unit: EA Qty: 1



**Part No. 256553**

- Advanced port finder function - switch light to blinks allowing a cable trace back to the switch
- Combines all-in-one Tester, Tone Generator and Port Finder
- Local loop-back test for open, shorts and miss-wiring
- Compatible with most cable tracers on the market
- DO NOT USE ON A LIVE CIRCUIT

NETFINDER PRO W/ PATCH PANEL ORGANISER

Unit: EA Qty: 1



**Part No. 256555**

- All-in-one tester: Tester, Tone Generator Port Finder and cable organizer
- Includes 18 remotes IDs for organizing up to 18 cables locations
- Local loop-back test for open, shorts and miss-wiring
- Remote terminator for testing pre-installed cables
- DO NOT USE ON A LIVE CIRCUIT

LANSMART TDR WIRE MAPPING TESTER

Unit: EA Qty: 1



**Part No. 256003**

- Time Domain Reflectometer (TDR) - a handheld, digital multifunction network cable tester and cable length meter
- Tests for shorts, miss-wiring, split pairs and shield continuity
- Measures the length of UTP and STP cables without remotes
- Test results displayed in pin-to-pin wire map format
- Compatible with any twisted pair category cable

## LAN TESTERS

KIT OF 12 X COAX REMOTE UNITS (#1 - #12)

Unit: EA Qty: 1



**Part No. 158053**

- Set of 12 COAX remotes numbered 1 -12 for use with the VDV II Cable Verifier
- Numbered remotes allow multiple cables to be tested quicker
- Use with R158000, R158002 and R158003

AMPLIFIER PROBE

Unit: EA Qty: 1



**Part No. 62-164**

- Works with any tone generator to identify wires
- Adjustable volume control to suit work environment
- Recessed ON/OFF button prevents battery drain
- Battery low indicator
- 9 volt battery included

PRO TONE & PROBE CABLE TRACING KIT

Unit: EA Qty: 1



**Part No. 33-864**

- Tone generator and amplifier probe for testing continuity and locating wires and cables
- Kit includes Tone generator (62-160)
- Amplifier probe (62-164)
- Soft black nylon carry bag included

TRACETONE CU WIRE TRACER

Unit: EA Qty: 1



**Part No. 62-140**

- Tone generator and amplifier probe for testing continuity and locating wires and cables
- Two selectable tone styles and adjustable volume
- Tone generator is stored in the base of the probe
- Includes RJ-11 alligator clip and RJ-11 cable assembly

VDV II VDV CABLE VERIFIER KIT

Unit: EA Qty: 1



**Part No. R158000**

- Voice, Data and Video Cable Verifier for testing data cabling, telephone wiring and video/security cabling
- Test 1, 2 or 3 pair RJ11/12 telephone cabling
- Test shielded and unshielded cat5E, cat6, cat6A and cat7 cabling
- Test COAX cable through F-connector interface
- Comes with 1x dual port and 1x coax remote units

VDV II PLUS CABLE VERIFIER

Unit: EA Qty: 1



**Part No. R158002**

- Voice, Data and Video Cable Verifier for testing data cabling, telephone wiring and video/security cabling
- All the features of the VDV II R158000 plus:
- Larger backlit 2.9 inch screen
- TDR feature measures cable length and distance to open
- Comes in a carry case with multiple test adaptors and leads

VDV II PRO CABLE VERIFIER

Unit: EA Qty: 1



**Part No. R158003**

- Voice, Data and Video Cable Verifier for testing data cabling, telephone wiring and video/security cabling
- All the features of the VDV II Plus model # R158003 plus:
- PoE detection with voltage information
- Media Service detection such as ISDN, PBX and PoE
- Comes in a carry case with multiple test adaptors and leads

# DATA TOOLS

KIT OF 12 X RJ45 REMOTE UNITS (#1 - #12)

Unit: EA Qty: 1



**Part No. 158050**

- Set of 12 RJ45 remotes numbered 1 -12 for use with the VDV II Cable Verifier
- Numbered remotes allow multiple cables to be tested quicker
- Use with R158000, R158002 and R158003

KIT OF 24 X RJ45 IDENTIFIERS (#1 - #24)

Unit: EA Qty: 1



**Part No. 158051**

- Set of 24 identifiers numbered 1 -24 for use with the VDV II Cable Verifier
- Multiple identifiers simple cable labelling at patch panel
- Use with R158000, R158002 and R158003

REMOTE 1 VDV II

Unit: EA Qty: 1



**Part No. 158055**

- Replacement Main dual port remote and COAX remote for VDV II Cable Verifier
- For use with R158000, R158002, R158003

SIGNALTEK CT KIT

Unit: EA Qty: 1



**Part No. R156004**

- Easy to use proof of performance tester for copper network cabling, tests data transmission, wire map, shorts, opens and crossed pairs
- Transmission performance tested to IEE 802.3ab Gigabit Ethernet
- TDR function measures distance to fault and cable length
- Autotest provides proof of performance in seconds
- Auto generation of PDF reports

SIGNALTEK NT TRANSMISSION TESTER

Unit: EA Qty: 1



**Part No. R156003**

- Easy to use proof of performance tester for fibre and copper network cabling, tests data transmission, wire map, shorts, opens and crossed pairs
- Transmission performance tested to IEE 802.3ab Gigabit Ethernet
- TDR function measures distance to fault and cable length
- Autotest provides proof of performance in seconds
- Auto generation of PDF reports



ACTIVE REMOTE # 1

Unit: EA Qty: 1



**Part No. 150054**

- Replacement smart remote numbered 1 for use with SignalTEK II, NaviTEK II and LanXPLOLER

SET OF 5 ACTIVE REMOTES #2 TO #6

Unit: EA Qty: 1



**Part No. 150059**

- Set of 5 smart remotes numbered 2 to 6 for use with SignalTEK II, NaviTEK II and LanXPLOLER

GBE FIBRE KIT 1000BASE-SX

Unit: EA Qty: 1



**Part No. MGKSX1**

- Multimode SFP and Fibre patch lead kit for use with LanXplorer, NaviTEK NT and SignalTEK NT testers
- SFP module: Multimode 1000BASE-SX 850nm Wavelength
- Includes 1x LC-LC Duplex lead, 1x LC-SC Duplex lead,
- 1x SC Duplex thru adaptor and 1x SFP

LT III-INDUSTRIAL ETHERNET KIT

Unit: EA Qty: 1



**Part No. R160050**

- Industrial Ethernet kit for use with LanTEK III testers

LT III-CAT6A PLA REPLACEMENT TIPS (PAIR)

Unit: EA Qty: 1



**Part No. R161050**

- Replacement cat6A tips for RJ45 Permanent Link Adaptor (R161051)
- Changed in minutes with 3 simple steps
- Tips should be replaced after 2000 insertions
- For use with LanTEK III

# DATA TOOLS

LT III-CAT7A GG45 CHANNEL ADAPTOR

Unit: EA Qty: 1



**Part No. R161056**

- Cat7A GG45 channel adaptor for use with LANTEK III testers
- Single adaptor, order 2 if a pair is required.

LT III-COAX ADAPTOR (SINGLE)

Unit: EA Qty: 1



**Part No. R161057**

- COAX adaptor for use with LANTEK III testers
- Single channel adaptor, order 2 if a pair is required.
- Used to test TIA/EIA Category 7A and ISO ClassFA channels and permanent links

LT III-TALK SET

Unit: EA Qty: 1



**Part No. R161060**

- Talk set for use with LanTEK III testers

LT III-COAX CALIBRATION CABLE

Unit: EA Qty: 1



**Part No. R161063**

- Coax calibration cable for use with LanTEK III testers

FIBERTEK-III - MM LED KIT

Unit: EA Qty: 1



**Part No. R164005**

- FiberTEK III multimode (850/1300nm) kit with LED light sources for multimode fibre for use with LanTEK III
- Includes two multimode FiberTEK III modules
- 6x SC-SC 50um MM patch cords (Compliant to IOS/IEC 14763-3)
- SC, FC and ST adaptors x 2 sets
- Lockable semi-rigid carrying case

FIBERTEK-III - SM LASER KIT

Unit: EA Qty: 1



**Part No. R164006**

- FiberTEK III singlemode (1310/1550nm) kit with laser light sources for singlemode fibre for use with LanTEK III
- Includes two singlemode FiberTEK III modules,
- 6x SC-SC 9um SM patch cords (Compliant to IOS/IEC 14763-3)
- SC, FC and ST adaptors x 2 sets
- Lockable semi-rigid carrying case

FIBERTEK-III - MM LED & SM LASER KIT

Unit: EA Qty: 1



**Part No. R164007**

- FiberTEK III multimode (850/1300nm) and singlemode (1310/1550nm) kit with LED (MM) and laser (SM) light sources for use with LanTEK III
- Includes 4x FiberTEK III modules (2x SM and 2x MM)
- 6x SM and 6x MM SC-SC patch cords (Compliant to IOS/IEC 14763-3)
- SC, FC and ST adaptors x 2 sets
- Lockable semi-rigid carrying case

FT III-SET OF SC/FC/PC/ST SCREW ADAPTOR

Unit: EA Qty: 1



**Part No. R164060**

- Replacement set of screw on adaptors for use with FiberTEK III modules
- Kit includes an FC, SC and ST adaptor

FT III-CABLE&ADAPTER KIT LC MM 50/125?M

Unit: EA Qty: 1



**Part No. R164061**

- Multimode (50um) patch lead and adaptor kit for use with FiberTEK III modules
- Kit includes 6x LC-LC Simplex 50um patch leads
- 2x LC-SC Simplex 50um patch leads
- 4x LC Duplex thru adaptors and 2x LC screw on adaptors (Rx port)
- Supplied with a storage pouch

FT III-CABLE&ADAPTER KIT LC SM 9/125?M

Unit: EA Qty: 1



**Part No. R164062**

- Singlemode (9um) patch lead and adaptor kit for use with FiberTEK III modules
- Kit includes 6x LC-LC Simplex 9um patch leads
- 2x LC-SC Simplex 9um patch leads
- 4x LC Duplex thru adaptors and 2x LC screw on adaptors (Rx port)
- Supplied with a storage pouch

# DATA TOOLS

FT III-LC RX ADAPTER FOR MM AND SM

Unit: EA Qty: 1



**Part No. R164064**

- Screw on LC adaptor for use with FiberTEK III modules (Rx port)



LANXPLOER PRO PREMIUM

Unit: EA Qty: 1



**Part No. R150001**

- Easy to use network troubleshooter for analysing and diagnosing problems in copper and fibre based networks, devices, cables and Wi-Fi interfaces
- Transmission performance tested to IEE 802.3ab Gigabit Ethernet
- VoIP monitor, Wi-Fi site survey, PoE power consumption
- Traffic statistics, VoIP QoS and signal testing
- Auto generation of PDF reports



SET OF 11 ACTIVE REMOTES #2 TO #12

Unit: EA Qty: 1



**Part No. 150050**

- Active remote numbered 2-12 for use with SignalTEK, NaviTEK and LanXPLOER testers
- Spend less time moving a single remote across multiple ports



LANTEK III 500MHZ KIT INC PERML ADAPTERS

Unit: EA Qty: 1



**Part No. R161003**

- Easy to use cable certifier for testing up to 500MHz cat6A/ ISO Class EA. Meets existing TIA and ISO/IEC performance requirements
- Includes cat6A RJ45 Permanent Link Adaptors x2
- Kit comes with carry case, Li-ion batteries x2, power adaptor x2
- Automatically generate test reports in PDF or CSV format
- Transfer test data to your mobile using the Ideal AnyWARE App



LANTEK III 1000MHZ KIT INC PERML ADAPTER

Unit: EA Qty: 1



**Part No. R161004**

- Easy to use cable certifier for testing up to 1000MHz cat7A/ ISO Class FA. Meets existing TIA and ISO/IEC performance requirements
- Includes cat6A RJ45 Permanent Link Adaptors x2
- Kit comes with carry case, Li-ion batteries x2, power adaptor x2
- Automatically generate test reports in PDF or CSV format
- Transfer test data to your mobile using the Ideal AnyWARE App



CHANNEL ADAPTOR RJ45 CAT5E/6 LANTEK III

Unit: EA Qty: 1



**Part No. R161052**

- Channel Adaptor for testing cat5E/6 Channels with LANTEK III
- Single Channel Adaptor (1 adaptor only)



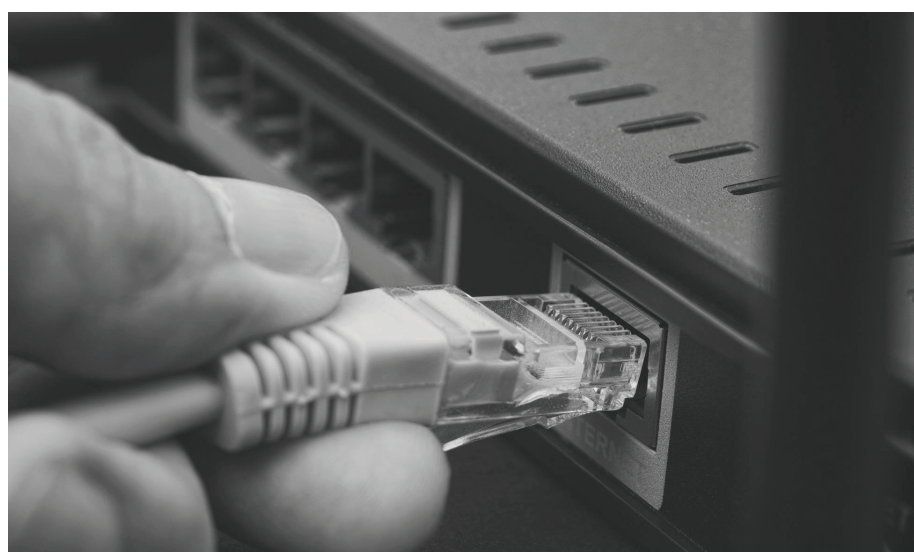
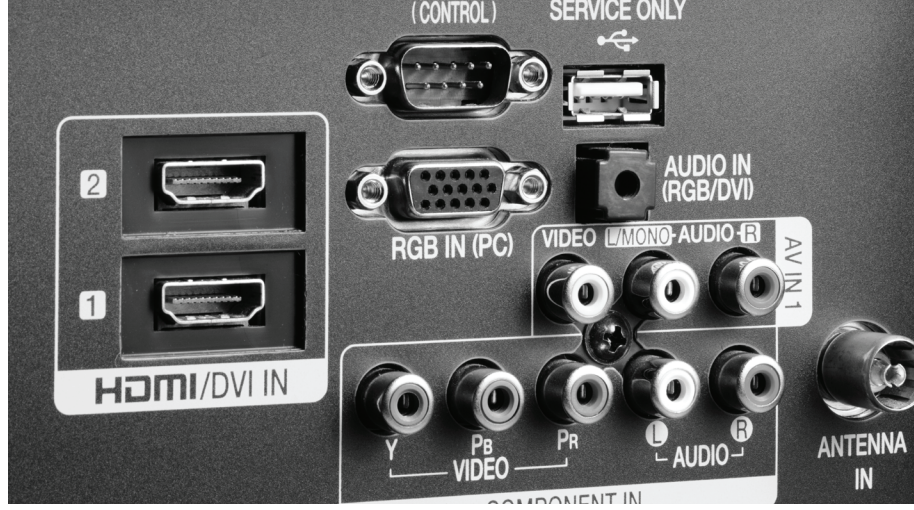
- cat6A RJ45 Permanent Link adaptor for use with LANTEK III testers
- Tips should be replaced after 2000 insertions
- Replacement tips: R161050
- Single permanent link adaptor, order 2 if a pair is required.



Part No.	Description	Unit	Qty
<b>R161051</b>	LT III-CAT6A RJ45 PERMANENT LINK ADAPTOR	EA	1
<b>R161053</b>	LT III-CAT6A RJ45 CHANNEL ADAPTOR SINGLE	EA	1
<b>R161054</b>	LT III-CAT7A TERA CHANNEL ADAPTOR	EA	1
<b>R161055</b>	LT III-CAT7A EC7 CHANNEL ADAPTOR	EA	1
<b>R164050</b>	FT III-ENCIRCLED FLUX 50/125UM CABLE	EA	1
<b>R164051</b>	FT III-ENCIRCLED FLUX 50/125UM CABLE	EA	1
<b>R164053</b>	FT III-CABLE KIT SC/PC MM 50/125UM	EA	1
<b>R164054</b>	FT III-CABLE KIT FC/PC MM 50/125UM	EA	1
<b>R164055</b>	FT III-CABLE KIT ST/PC MM 50/125UM	EA	1
<b>R164056</b>	FT III-LC 50/125UM F/OPTIC CABLE&COUPLER	EA	1
<b>R164057</b>	FT III-CABLE KIT SC/PC SM 9/125UM	EA	1
<b>R164058</b>	FT III-CABLE KIT FC/PC SM 9/125UM	EA	1
<b>R164059</b>	FT III-LC 9/125UM F/OPTIC CABLE&COUPLER	EA	1

# INDEX

05AFFPF	33	C6UTP	15	PL240-8B1	34	PLC6BK20	9	R158000	43
05TK1	41	C6UTPS	16	PL240/8B	34	PLC6BK3	9	R158002	43
0644FST-C	21	CB10	7	PL240/8B5	34	PLC6BK5	9	R158003	43
0644RSL-C	20	CB3	7	PL240/CLB	34	PLC6BL0.5	9	R160050	45
0644RSL-X	20	CB5	7	PL240/CLB5	34	PLC6BL1	9	R161003	48
0644RST-C	20	DMF11	7	PLC6ABE0.5	15	PLC6BL1.5	9	R161004	48
0644RST-X	20	DMF2	7	PLC6ABE1	15	PLC6BL10	9	R161050	45
0664FST-C	21	DMF3	7	PLC6ABE1.5	15	PLC6BL2	9	R161051	49
0664FST-X	21	DMF4	7	PLC6ABE10	15	PLC6BL20	9	R161052	49
0664RSL-C	20	DMF6	7	PLC6ABE2	15	PLC6BL3	9	R161053	49
0664RSL-X	20	DMFBM11	6	PLC6ABE3	15	PLC6BL5	9	R161054	49
0664RST-C	20	DMFBM15R	6	PLC6ABE5	15	PLC6GN0.5	10	R161055	49
0664RST-X	20	DMFBM27	6	PLC6ABK0.5	12	PLC6GN1	10	R161056	46
0666FST-C	21	DMP10	4	PLC6ABK1	12	PLC6GN1.5	10	R161057	46
0666FST-X	21	ELD10	26	PLC6ABK1.5	12	PLC6GN10	10	R161060	46
0666RSL-C	20	ELD10P	27	PLC6ABK10	12	PLC6GN2	10	R161063	46
0666RSL-X	20	ELD15	26	PLC6ABK2	12	PLC6GN20	10	R164005	46
0666RST-C	20	ELD15P	27	PLC6ABK3	12	PLC6GN3	10	R164006	47
0666RST-X	20	ELD1P	27	PLC6ABK5	12	PLC6GN5	10	R164007	47
06CT468-1	39	ELD2	26	PLC6ABL0.5	13	PLC6GY0.5	10	R164050	49
150050	48	ELD20	26	PLC6ABL1	13	PLC6GY1	10	R164051	49
150054	45	ELD20P	27	PLC6ABL1.5	13	PLC6GY1.5	10	R164053	49
150059	45	ELD2P	27	PLC6ABL10	13	PLC6GY10	10	R164054	49
158050	44	ELD4	26	PLC6ABL2	13	PLC6GY2	10	R164055	49
158051	44	ELD4P	27	PLC6ABL3	13	PLC6GY20	10	R164056	49
158053	42	ELD6	26	PLC6ABL5	13	PLC6GY3	10	R164057	49
158055	44	ELD6P	27	PLC6AGN0.5	13	PLC6GY5	10	R164058	49
256003	42	ELD8	26	PLC6AGN1	13	PLC6OR0.5	10	R164059	49
256553	42	ELH10	27	PLC6AGN10	13	PLC6OR1	10	R164060	47
256555	42	ELH15	27	PLC6AGN2	13	PLC6OR1.5	10	R164061	47
256653T	41	ELH20	27	PLC6AGN3	13	PLC6OR10	10	R164062	47
33-864	43	ELID15A10	28	PLC6AGN5	13	PLC6OR2	10	R164064	48
35RJTST8	41	ELID15A15	28	PLC6AGY0.5	13	PLC6OR3	10	REM	4
3PIECBK	34	ELID20	28	PLC6AGY1	13	PLC6OR5	10	RG6/11-CT	41
3PIECBKRA	35	ELID30	28	PLC6AGY1.5	13	PLC6PK0.5	11	RJ1245	39
3PIECBKRYF-1	35	ELID35	28	PLC6AGY10	13	PLC6PK1	11	TC2	8
3PIECGY	35	FC11	5	PLC6AGY2	13	PLC6PK1.5	11	TC4	8
40DVI-DEXT5	33	FC27	6	PLC6AGY3	13	PLC6PK10	11	TELSP2	39
40DVI-DMM1	33	FCOMT	41	PLC6AGY5	13	PLC6PK2	11	UB10	8
40DVI-DMM1.8	33	FDP	5	PLC6AGY0.5	14	PLC6PK3	11	UB3	8
40DVI-DMM10	33	HDMIEXT	30	PLC6APU1	14	PLC6PK5	11	UB5	8
40DVI-DMM3	33	HDMISP4P	30	PLC6APU10	14	PLC6PU0.5	11	USB2AB2	32
40DVI-DMM5	33	HLBH	4	PLC6APU2	14	PLC6PU1	11	USB2AB3	32
40HDMI1.4MM0.5	34	HX2	40	PLC6APU3	14	PLC6PU1.5	11	USB2AB5	32
40HDMI1.4MM1	34	J6/10	16	PLC6APU5	14	PLC6PU10	11	USB2EXT-12M	33
40HDMI1.4MM10	34	J6/50	16	PLC6ARD0.5	14	PLC6PU2	11	WPC-1	16
40HDMI1.4MM15	34	J6A/10S	16	PLC6ARD1	14	PLC6PU3	11	WPC-2	16
40HDMI1.4MM2	34	J6AS	16	PLC6ARD10	14	PLC6PU5	11	WPC-3	16
40HDMI1.4MM3	34	J6BK/10	16	PLC6ARD2	14	PLC6RD0.5	11	WPC-4	16
40HDMI1.4MM5	34	KDAT	38	PLC6ARD3	14	PLC6RD1	11	WPC-5	16
40IEC1	35	KDAT1	38	PLC6ARD5	14	PLC6RD1.5	11	WPC-6	16
40IEC141502	36	KOAX1	40	PLC6AWH0.5	14	PLC6RD10	11	WPC-BNOSE	17
40IEC14151.5	36	KOAX2	40	PLC6AWH1	14	PLC6RD2	11	WPC-BNOSER	17
40IEC19202	36	KOAX3	40	PLC6AWH1.5	14	PLC6RD20	11	WPC-MB13MM	17
40IEC19205	36	KPT1	38	PLC6AWH10	14	PLC6RD3	11	WPC-MB35MM	17
40IEC2	35	KPT2	38	PLC6AWH2	14	PLC6RD5	11		
40IEC3	35	KPT3	39	PLC6AWH3	14	PLC6WH0.5	12		
40IEC5	35	KPT4	39	PLC6AWH5	14	PLC6WH1	12		
40IECMF0.5	36	LSW24	30	PLC6AYL0.5	15	PLC6WH10	12		
40IECMF1	36	LSW24G	30	PLC6AYL1	15	PLC6WH2	12		
40IECMF2	36	MDF	5	PLC6AYL1.5	15	PLC6WH20	12		
40IECMF3	36	MGKSX1	45	PLC6AYL10	15	PLC6WH3	12		
40IECMF5M	36	PADRH1	24	PLC6AYL2	15	PLC6WH5	12		
40RJ12FFF	22	PADV1	24	PLC6AYL3	15	PLC6YL0.5	12		
40UPSIEC1.5M	36	PB1USB2	24	PLC6AYL5	15	PLC6YL1	12		
40UPSIEC150MM	36	PB4SW	25	PLC6BE0.5	8	PLC6YL1.5	12		
40USB2AMF2-BK	32	PB6SW	26	PLC6BE1	8	PLC6YL10	12		
40USB2AMF3-BK	32	PB6USB2	25	PLC6BE1.5	8	PLC6YL2	12		
40USB2AMF5-BK	32	PB7	24	PLC6BE10	8	PLC6YL20	12		
42110DST-1	38	PB8	25	PLC6BE2	8	PLC6YL3	12		
42LAUTP	17	PB80	26	PLC6BE20	8	PLC6YL5	12		
45-162	40	PBFS4	25	PLC6BE3	8	PP24-USK	18		
62-140	43	PBM11W	5	PLC6BE5	8	PP24C5E	18		
62-164	42	PBM27W	5	PLC6BK0.5	9	PP24C6	18		
C68P8CS2P-L	22	PC624P	18	PLC6BK1	9	PP50TELCO	7		
C68P8CS2P-X	22	PDMP10	4	PLC6BK1.5	9	R150001	48		
C68P8CUS2P-L	21	PDMP10-PK	4	PLC6BK10	9	R156003	44		
C6AF/FTP	15	PL240-8B0.5	34	PLC6BK2	9	R156004	44		



## CABAC'S COMPLETE PRODUCT RANGE

CABAC is an Australasian manufacturer, distributing quality products and unsurpassed service to the electrical and data industries. Please visit the CABAC website to see the latest range or download our Apple or Android APP.

### LIGHTING AND ACCESSORIES



### SAFETY



### LUGS AND LINKS



### HEATSHRINK



### TEST AND MEASUREMENTS



### HYDRAULIC TOOLS



### HAND TOOLS



### PREMIUM HAND TOOLS



### POWERJOINT



### FIBRE



### DATA



### ELECTRICAL TAPES



In support of our policy of continuous product improvement we reserve the right to change materials and specifications without notice. Drawings, where shown, may not be to scale. Dimensions are metric and sizes maybe approximate. Where possible data sheets including MSDS are made available on our website or APPs. All products should be installed and used in accordance with manufacturer's instructions provided. Warning: products may be the subject of registered designs and patents. Refer to our website or APPs for terms and conditions on warranty.

Every effort has been made to ensure accuracy of content. However no liability will be met by CABAC or its suppliers for any errors or omissions. Product data and information is not binding.

All brands and logos are registered trademarks and are subject to copyright laws.

No part of this catalogue can be reproduced without consent of CABAC.

CNZ-CAT-DATA-V18

